

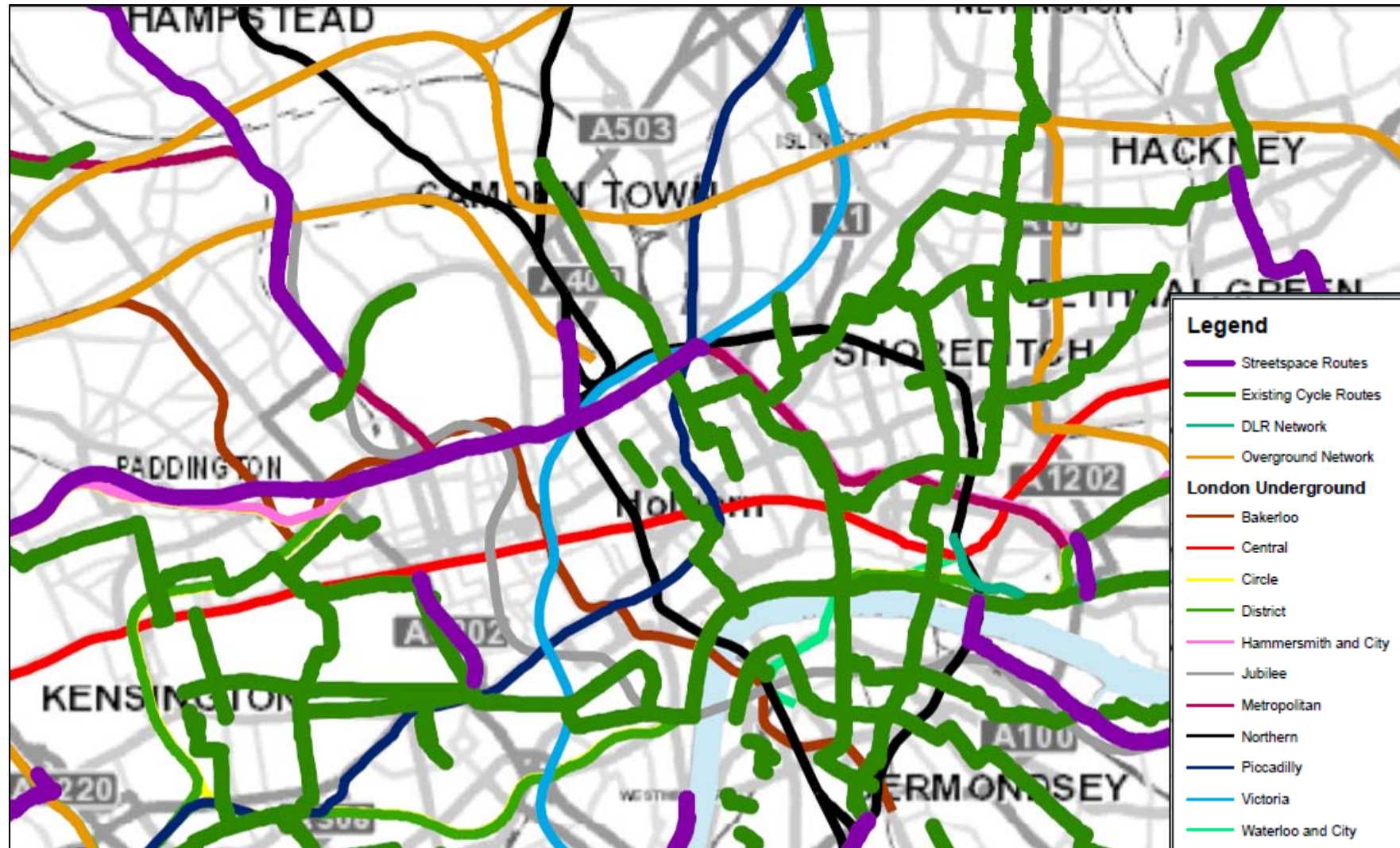
TfL Streetspace Initiatives in Camden

Cyclists

- Euston Road – Cycle lanes promised, nothing yet
- Finchley Road – Nothing yet
- Oakley Square – Cycle lane promised, nothing yet
- Lidlington Place and Harrington Square – Pop-up cycle lane southbound. Widened bus lane northbound.
- Hampstead Road – Short pop-up cycle lane southbound from Harrington Square and northbound at Drummond Street. Widened bus lanes approaching and leaving Euston Circus

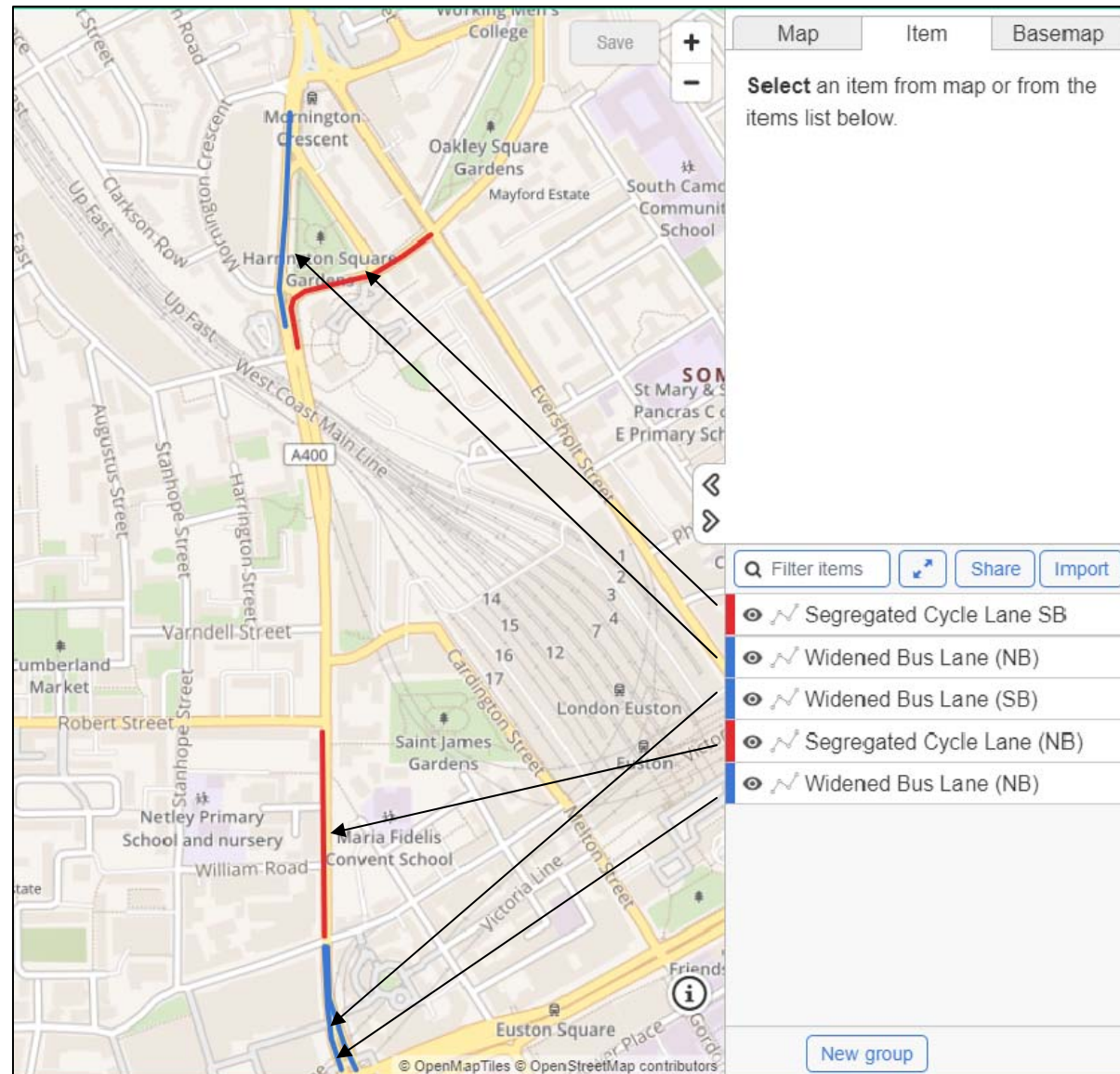
http://camdencyclists.org.uk/tfl-SCA-maptiles/Streetspace_for_London/emerging-routes/leaflet.html

TfL Streetspace Plan for Cyclists



http://camdencyclists.org.uk/tfl-SCA-maptiles/Streetspace_for_London/emerging-routes/leaflet.html

TfL Streetspace – Hampstead Road



Lidlington Place from Oakley Square



Harrington Square



Approaching Euston Circus



Hampstead Road Northbound at Drummond St



Harrington Square Northbound



TfL Streetspace Initiatives in Camden

Pedestrians

- Camden Road – Lane reallocated to pedestrians outside Sainsbury's but issue for cyclists
- Finchley Road – Pavement widening outside Tube station
- Camden High Street – Pavement widening (also Kentish Town Road)

Everyone

- Euston to Waterloo bus and cycle only – No details yet
- Holborn to Old Street bus and cycle only – No details yet

Not so good - Camden Road at Camden Street

