

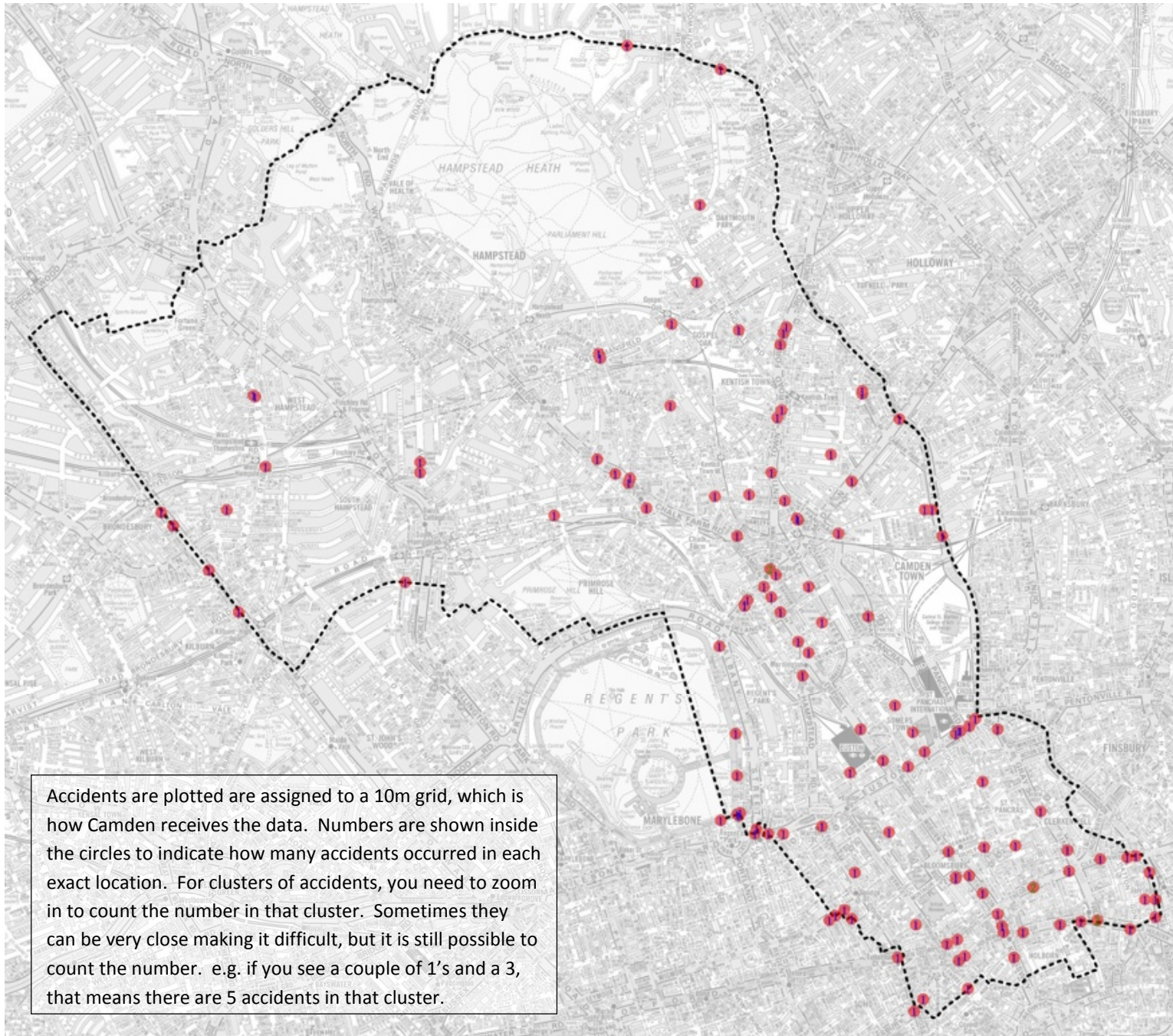
5 years of categorised accidents that resulted in cyclist casualties

Sam Longman (LB Camden)

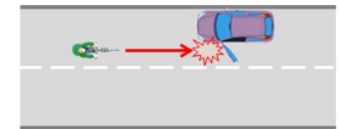
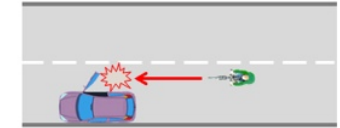
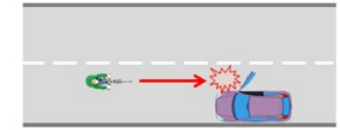
31 Jan 2014

			Start: End:	01 Aug 08 31 Jul 09	01 Aug 09 31 Jul 10	01 Aug 10 31 Jul 11	01 Aug 11 31 Jul 12	01 Aug 12 31 Jul 13
Ref	Cat Description	Total		Year 1	Year 2	Year 3	Year 4	Year 5
1	Hit open/opening door of parked car	132 10%		13 6%	22 9%	30 10%	33 11%	34 12%
2	Left Hook	135 10%		31 15%	23 10%	28 10%	24 8%	29 10%
3	Right hook	43 3%		2 1%	4 2%	11 4%	15 5%	11 4%
4	Right turn across cyclist path	224 17%		43 20%	38 16%	54 19%	46 15%	43 15%
5	Cut up to left	173 13%		32 15%	24 10%	42 15%	41 13%	34 12%
6	Cut up to right	23 2%		10 5%	2 1%	5 2%	4 1%	2 1%
7	Vehicle pulled out into cyclist path	129 10%		19 9%	27 12%	26 9%	26 8%	31 11%
8	Cyclist pulled out into vehicles path	98 7%		20 9%	29 12%	21 7%	14 4%	14 5%
9	Moved off from parked into cyclist path	15 1%		0 0%	0 0%	1 0%	11 4%	3 1%
10	Rear shunted the cyclist	83 6%		6 3%	17 7%	11 4%	26 8%	23 8%
11	Cycled into the back of vehicle	59 4%		9 4%	9 4%	9 3%	12 4%	20 7%
12	Cyclist Lost Control	63 5%		6 3%	13 6%	16 6%	13 4%	15 5%
13	Cyclist jumped red light	29 2%		2 1%	3 1%	8 3%	9 3%	7 2%
14	Vehicle jumped red light	5 <1%		1 <1%	1 <1%	1 <1%	2 1%	0 <1%
15	Hit pedestrian	39 3%		5 2%	5 2%	5 2%	11 4%	13 4%
16	Other	89 7%		12 6%	17 7%	20 7%	26 8%	14 5%
1339 100%				211 100%	234 100%	288 100%	313 100%	293 100%

1 - Hit open/opening door of parked car (132)

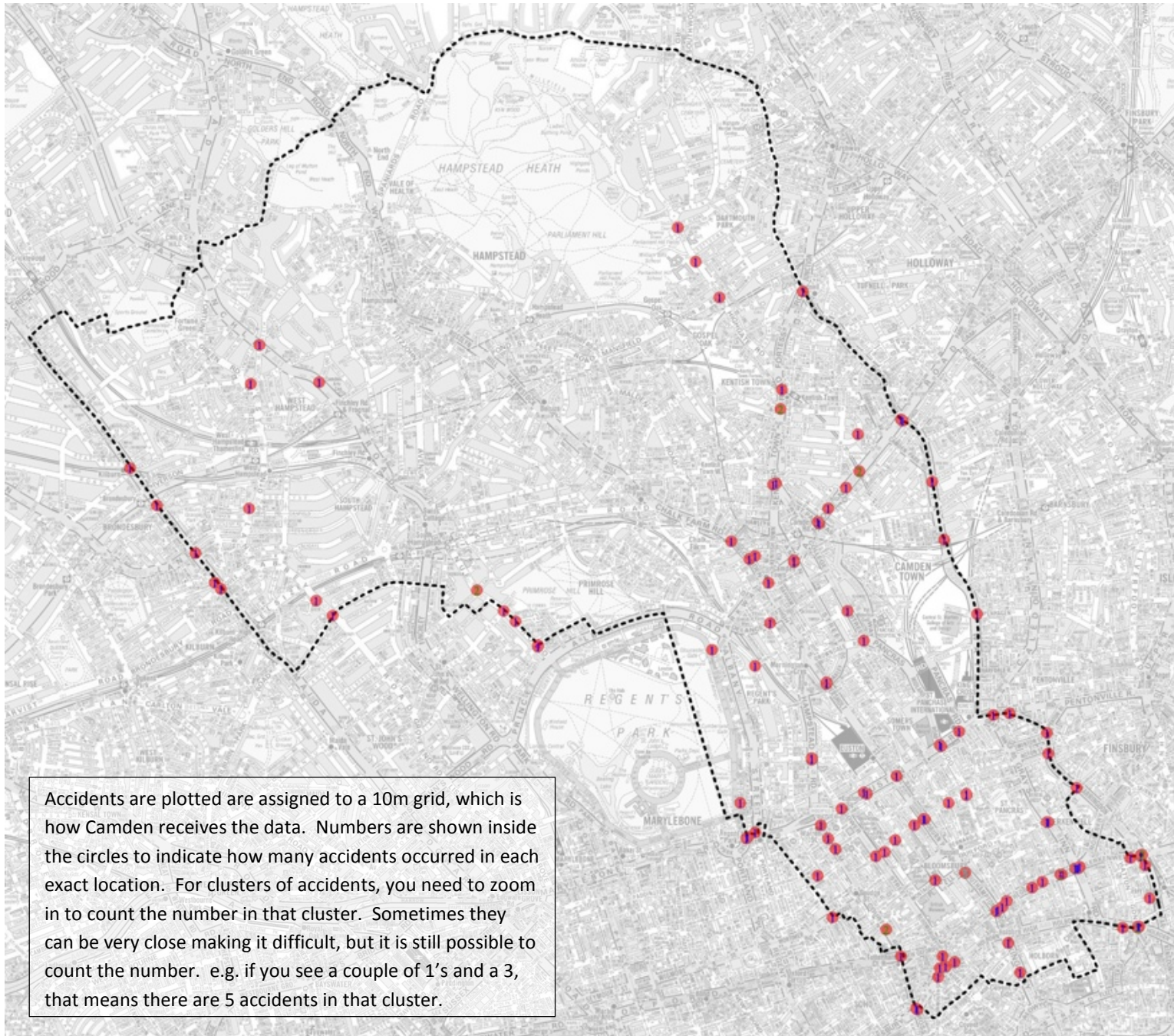


Examples

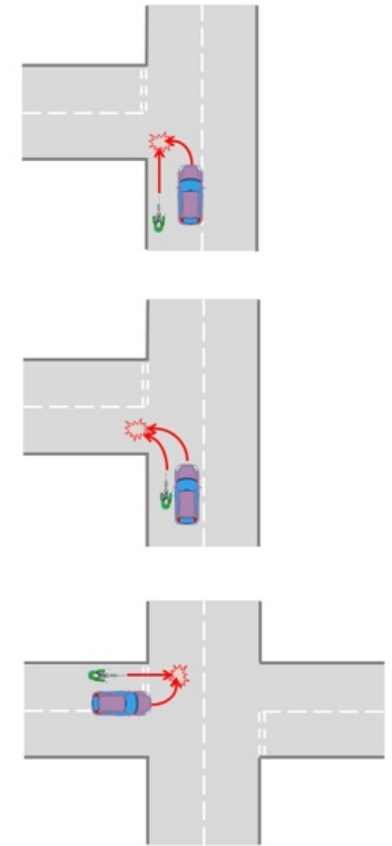


Etc.

2 - Left Hook (135)

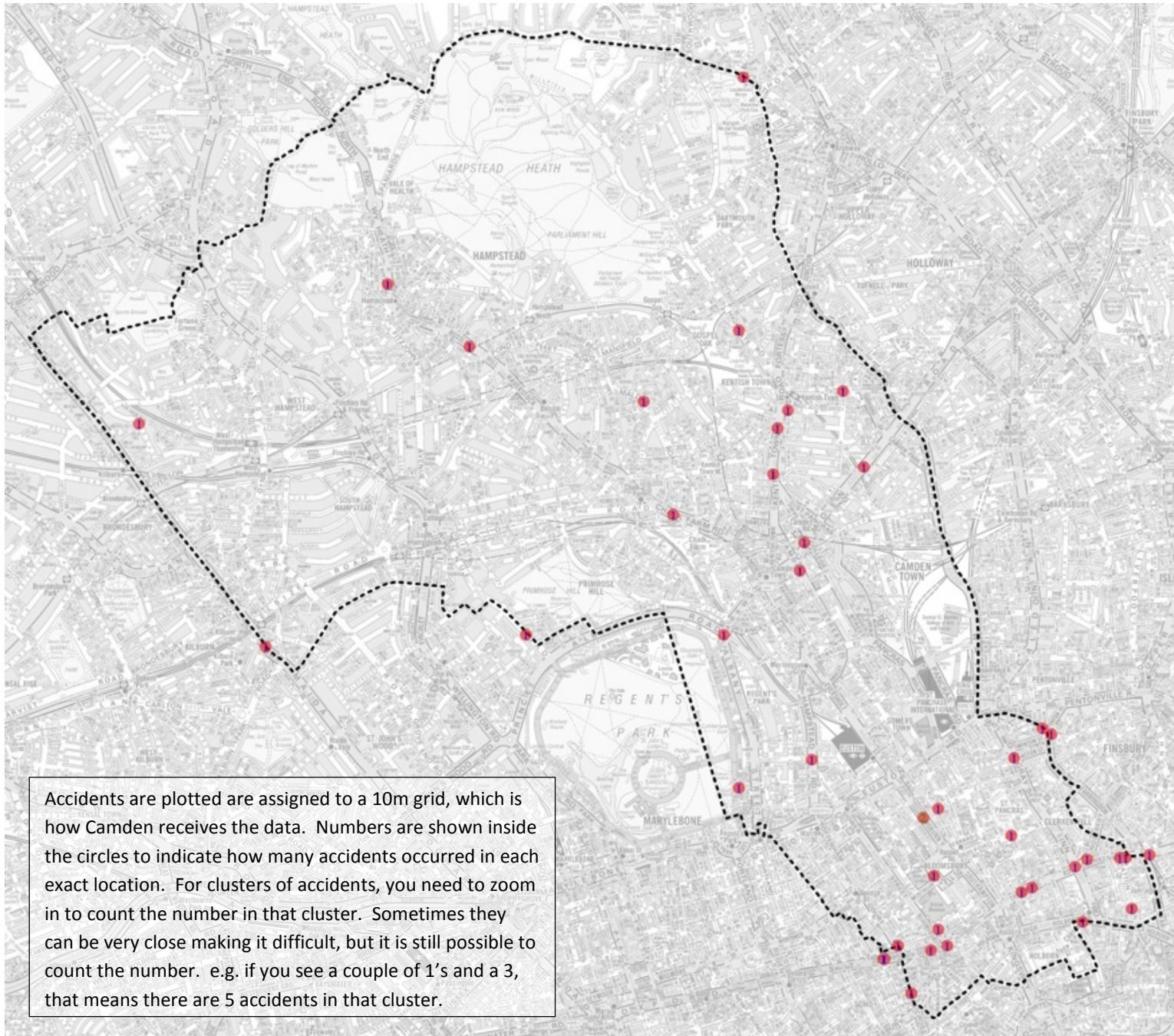


Examples

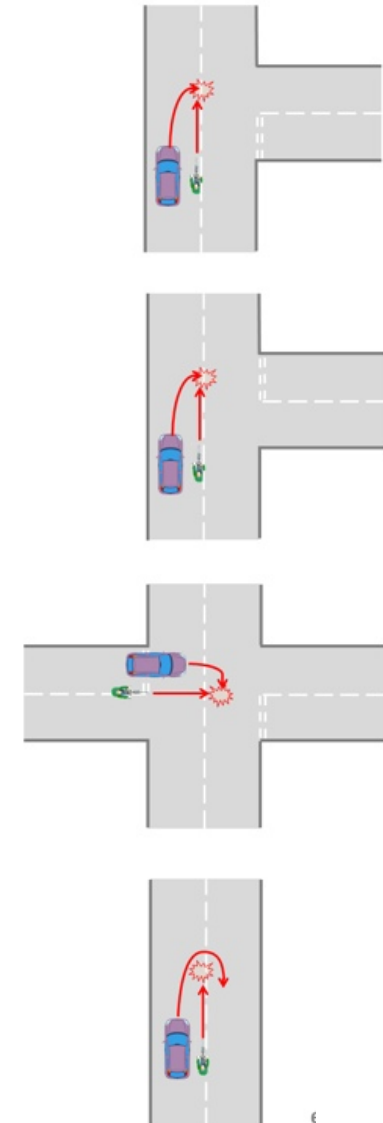


Etc.

3 - Right Hook (43)

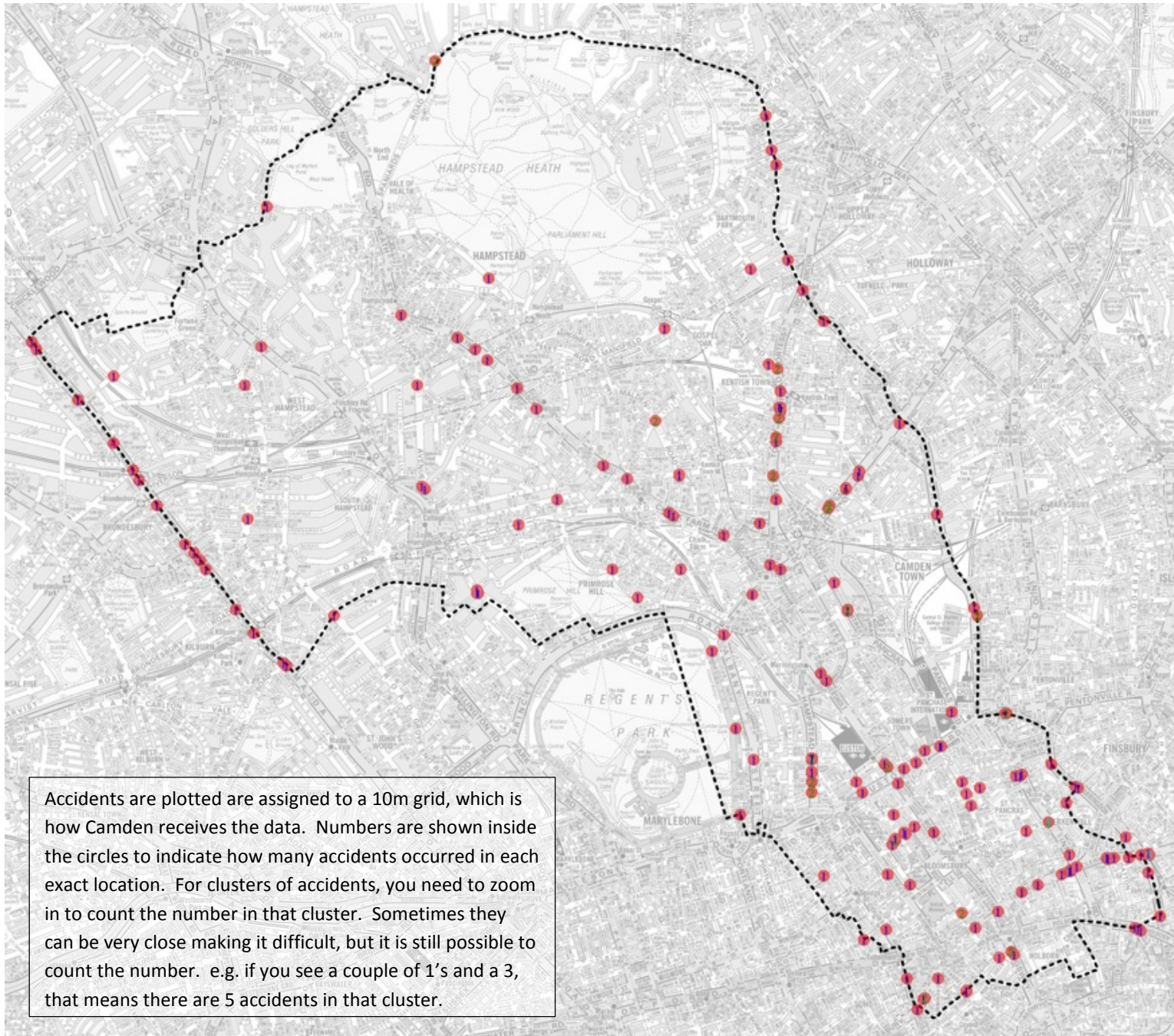


Examples

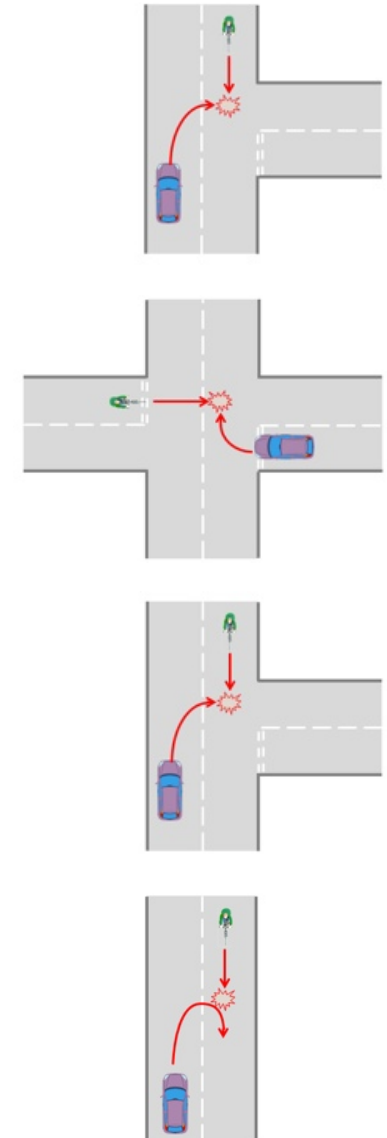


Etc.

4 - Right turn across cyclist path (224)

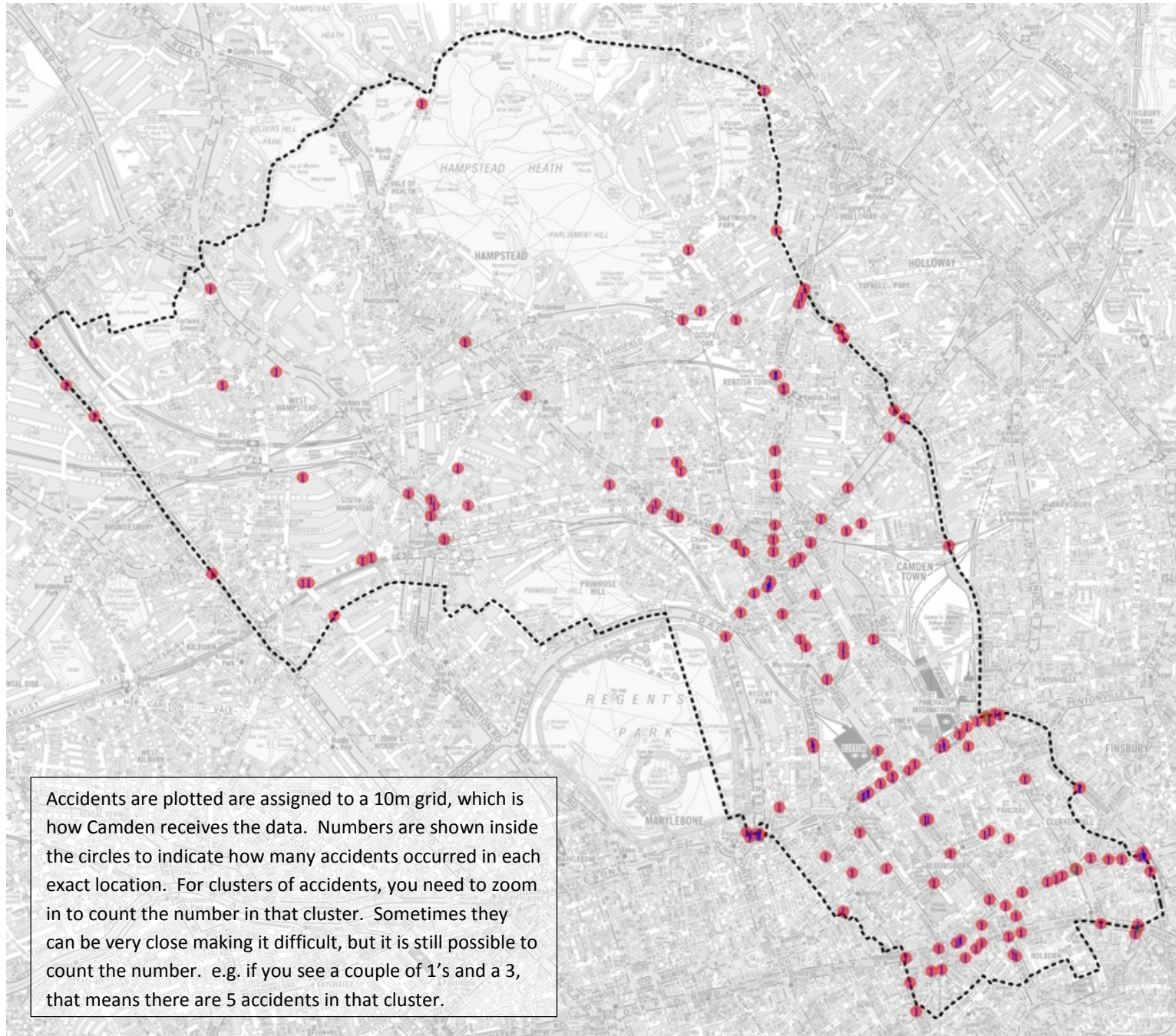


Examples

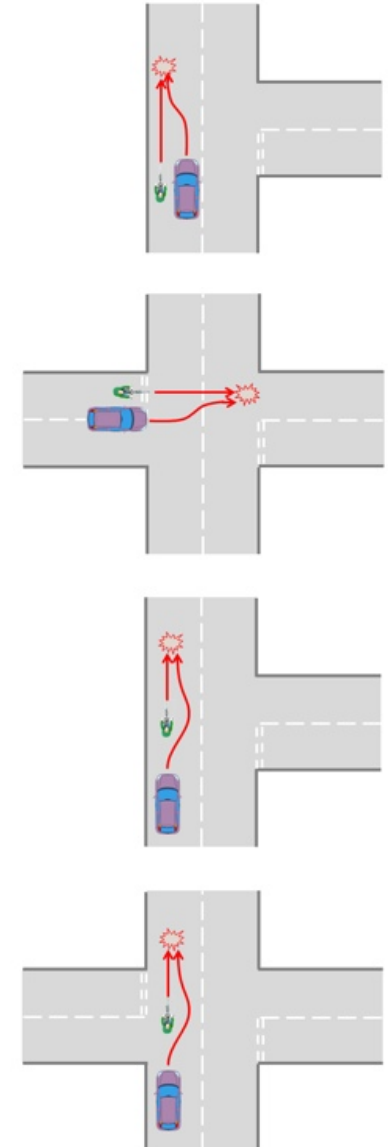


Etc.

5 - Cut up to left (173)

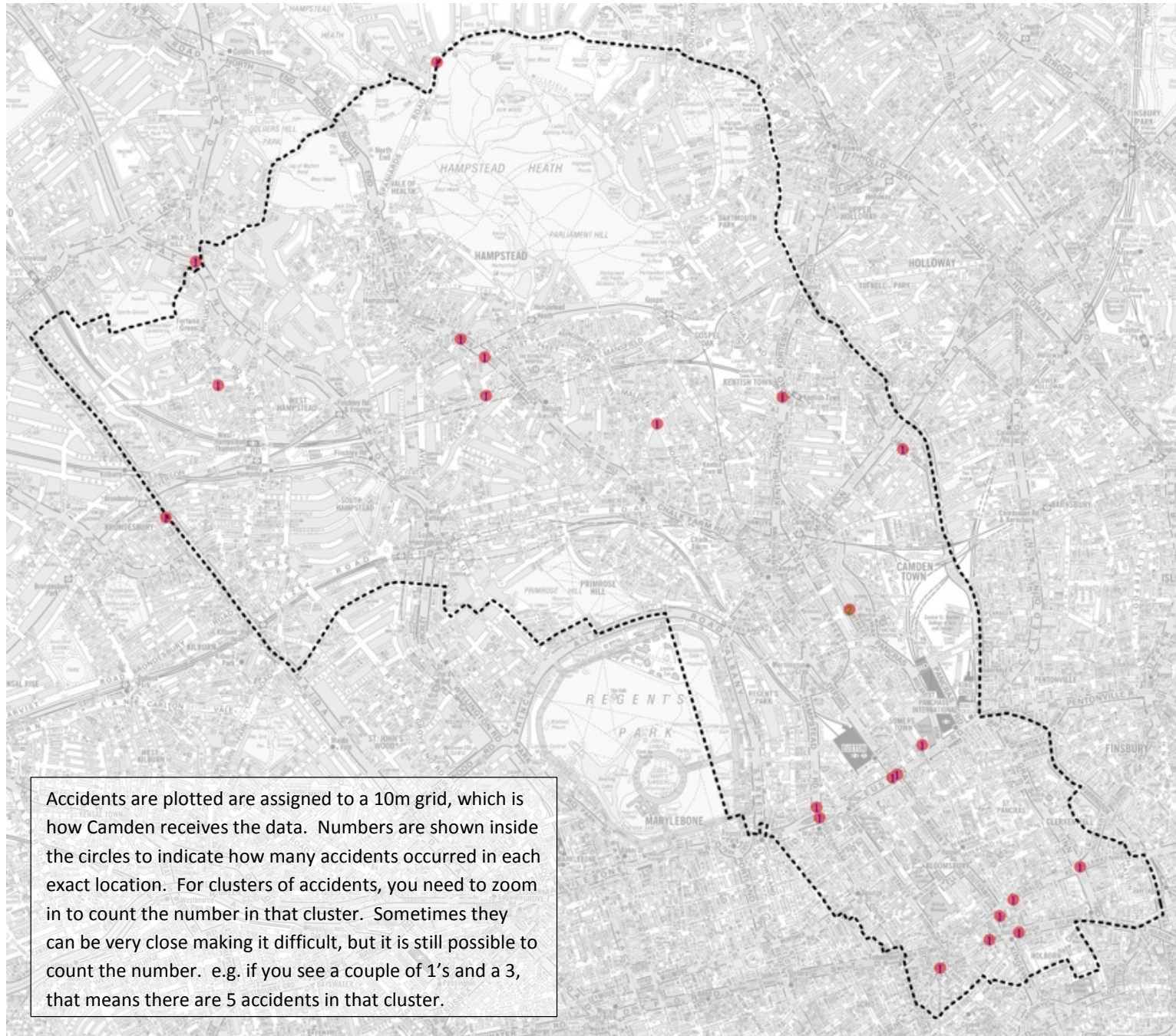


Examples

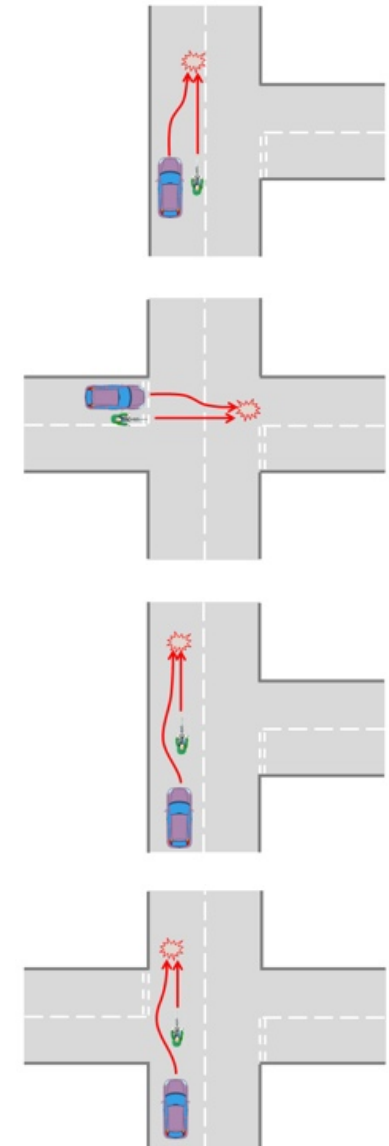


Etc.

6 - Cut up to right (23)

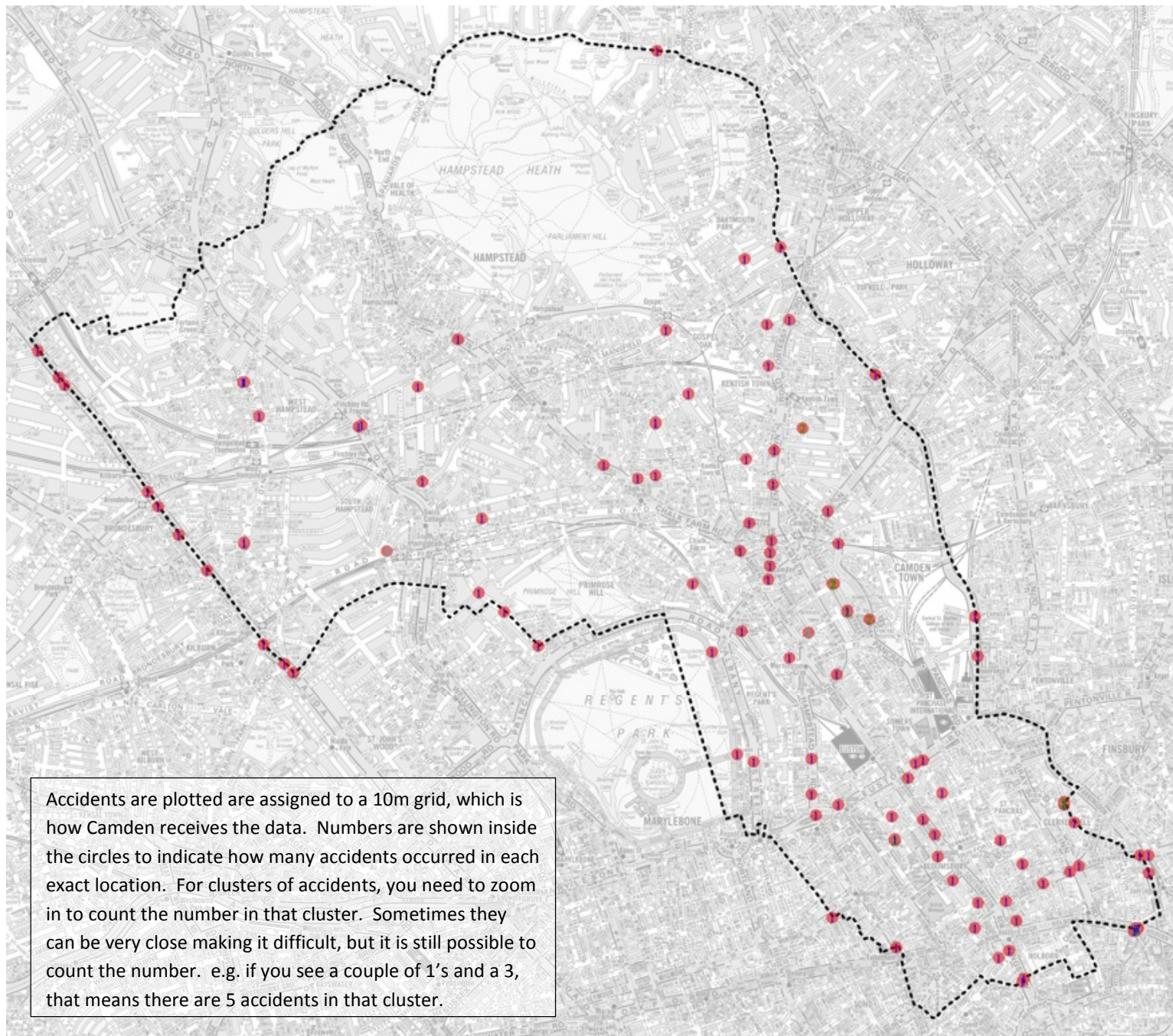


Examples

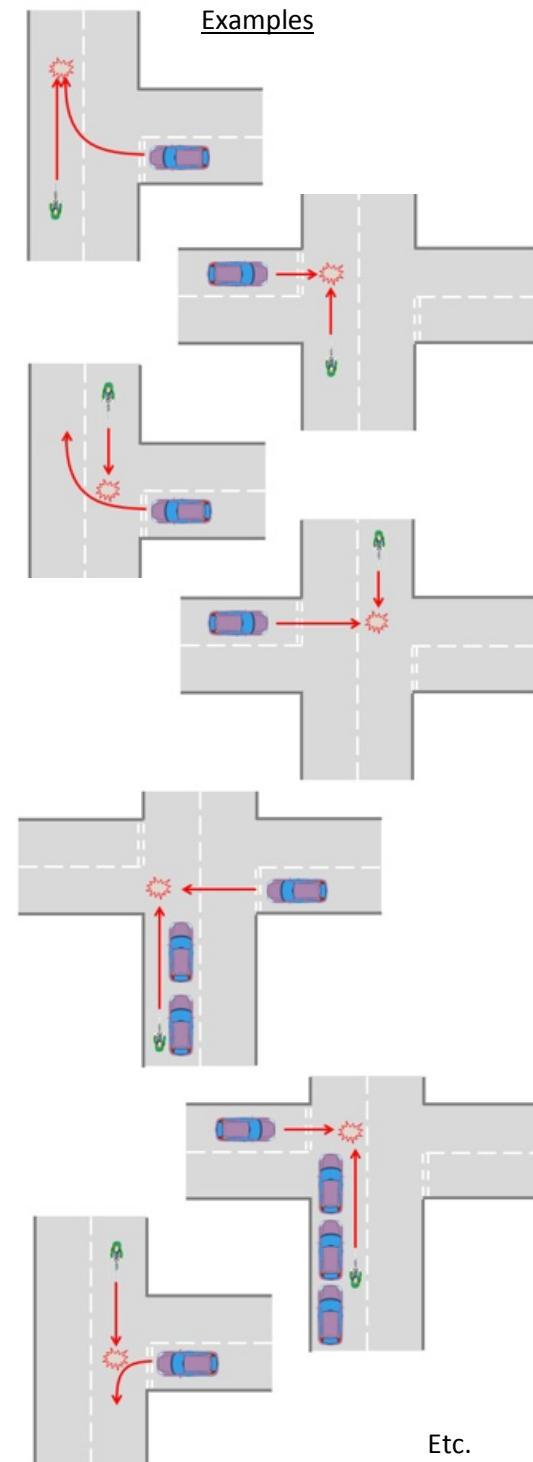


Etc.

7 - Vehicle pulled out into cyclist path (129)

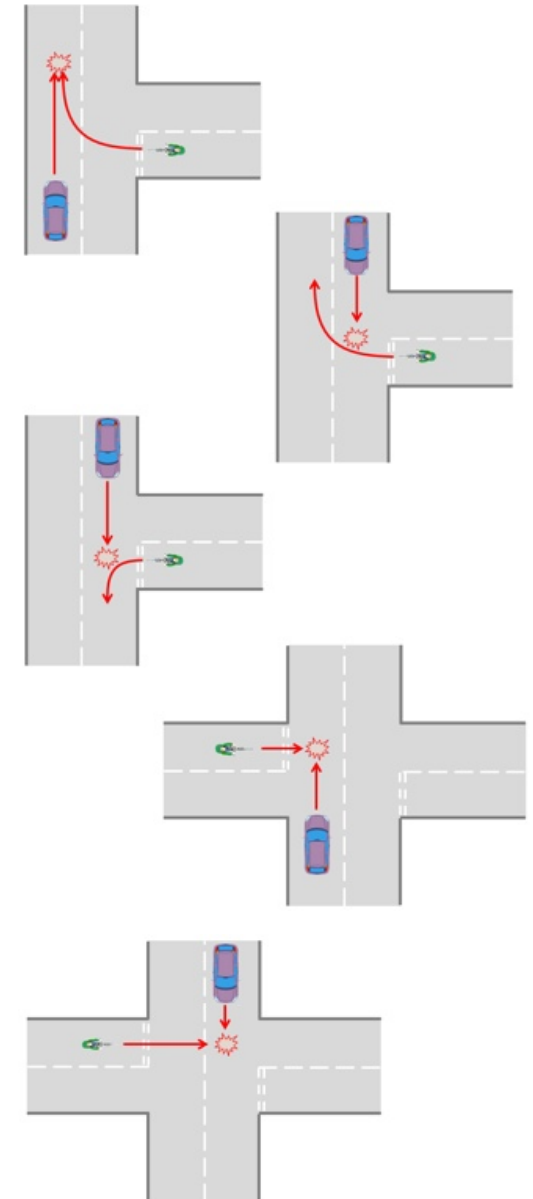
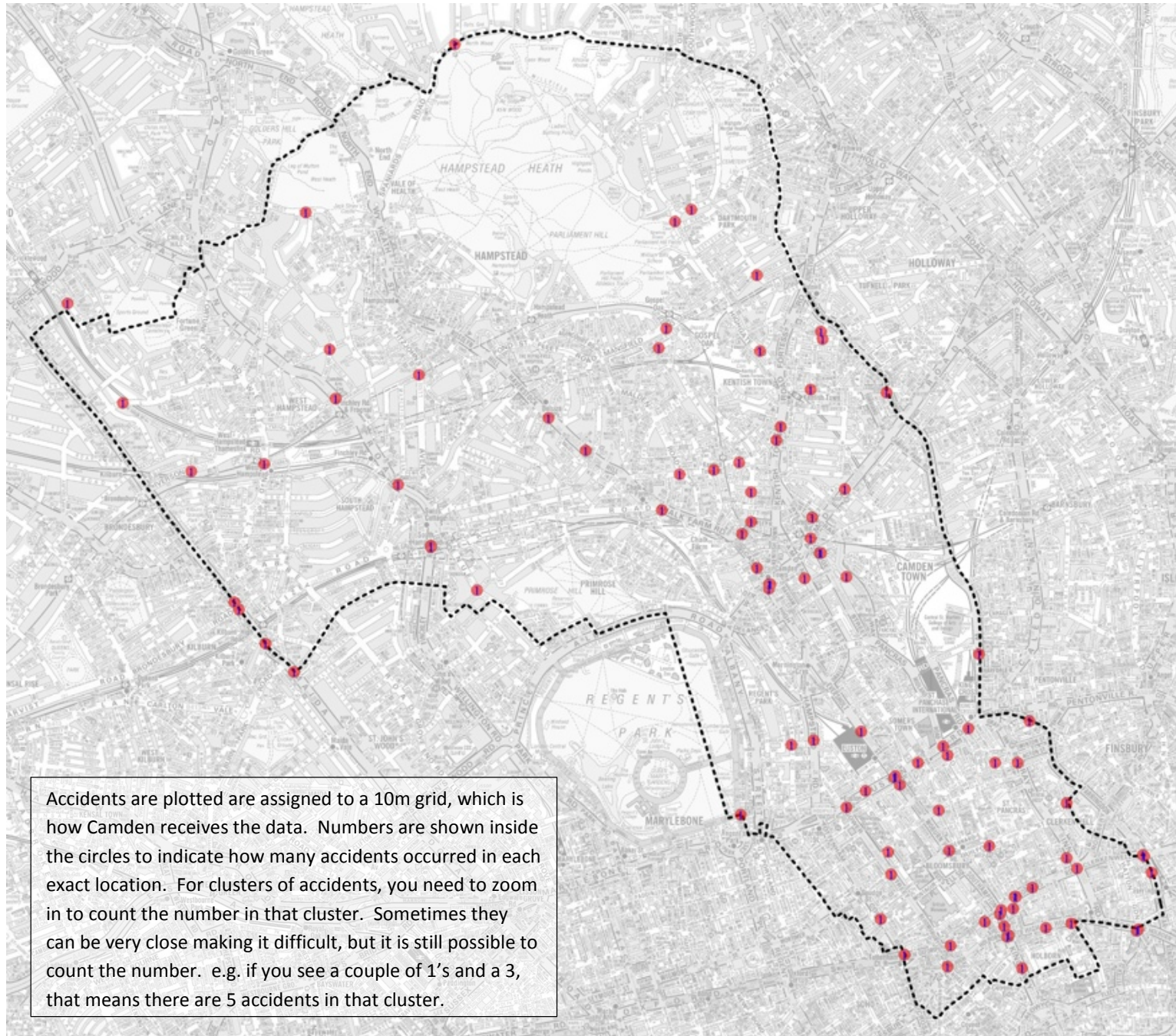


Examples



8 - Cyclist pulled out into vehicles path (98)

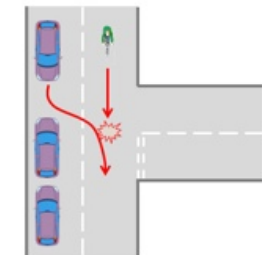
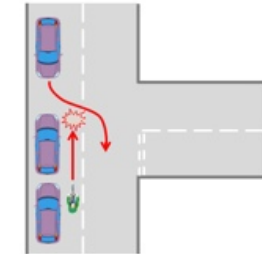
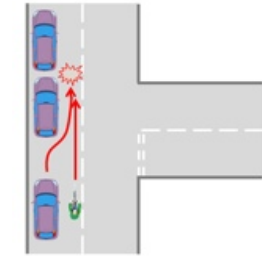
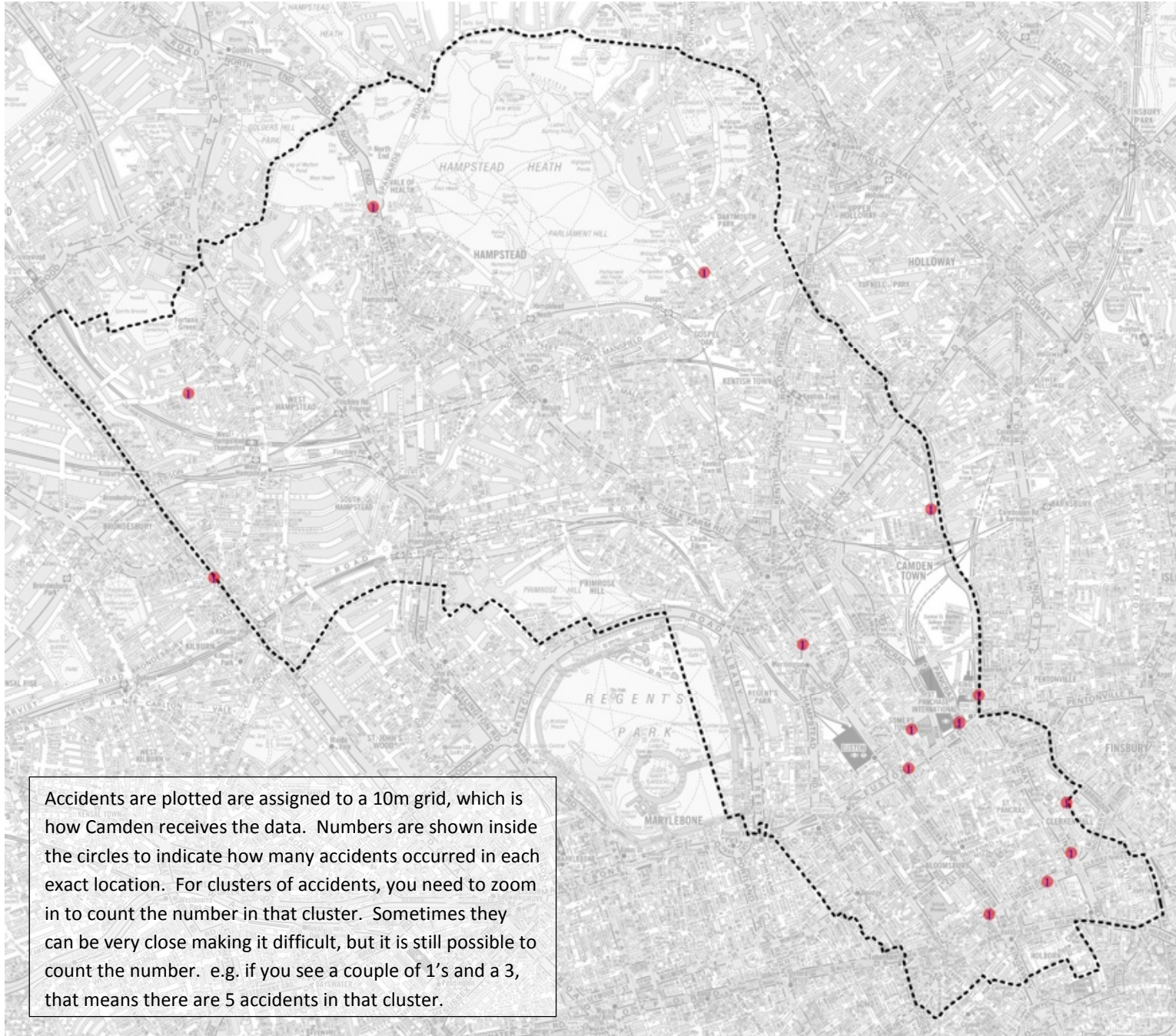
Examples



Etc.

9 - Moved off from parked into cyclist path (15)

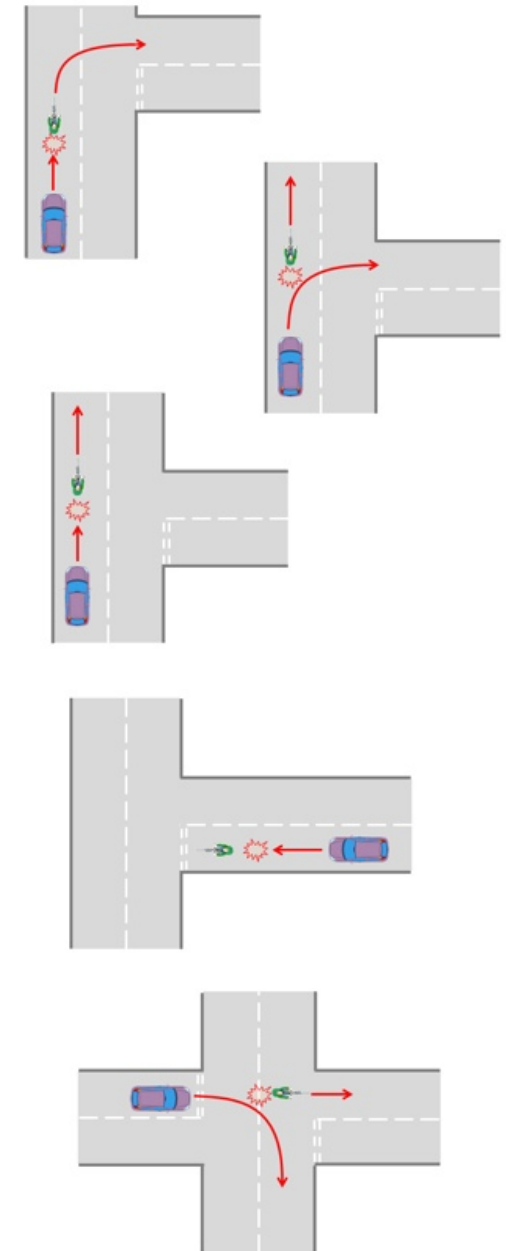
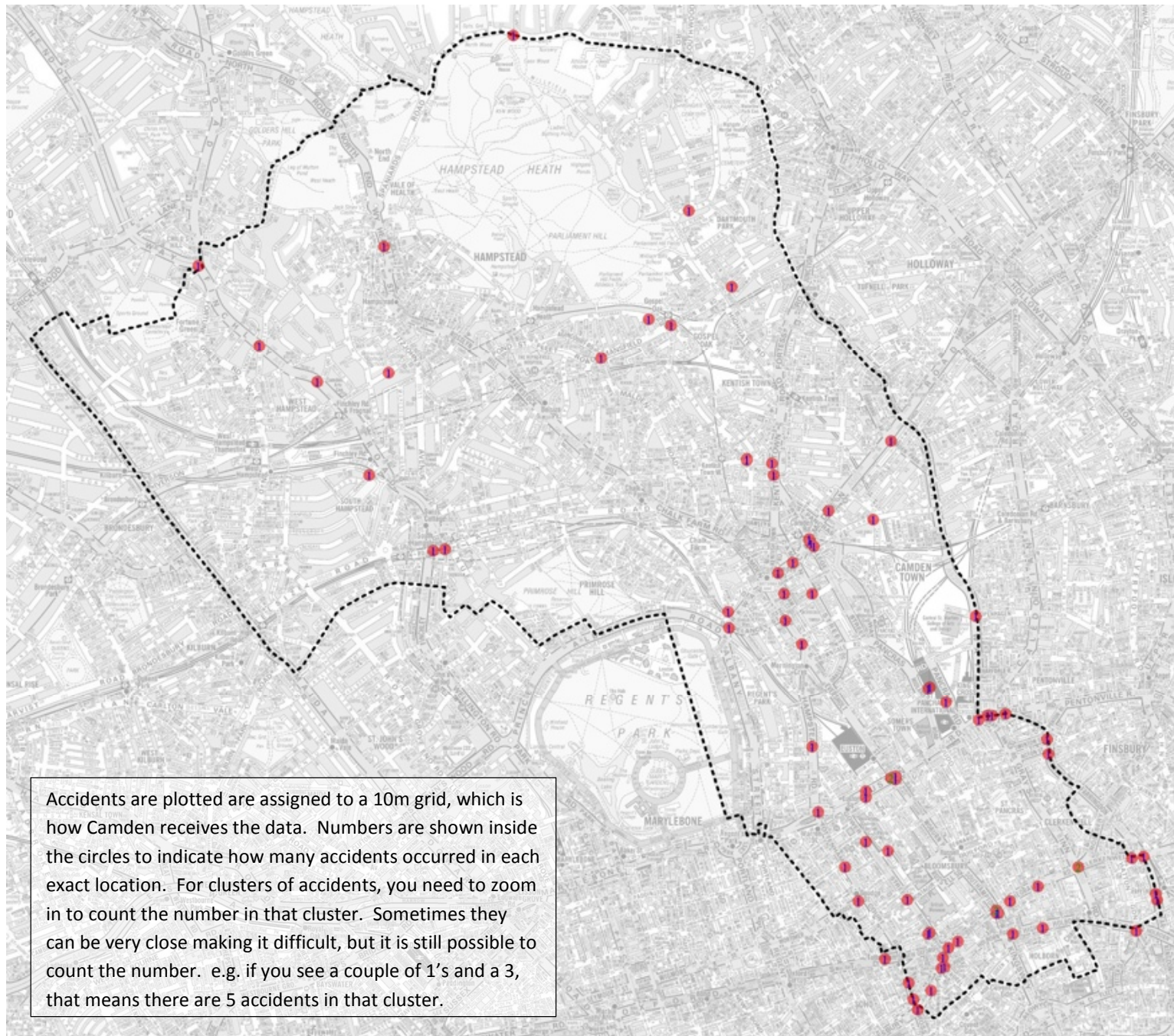
Examples



Etc.

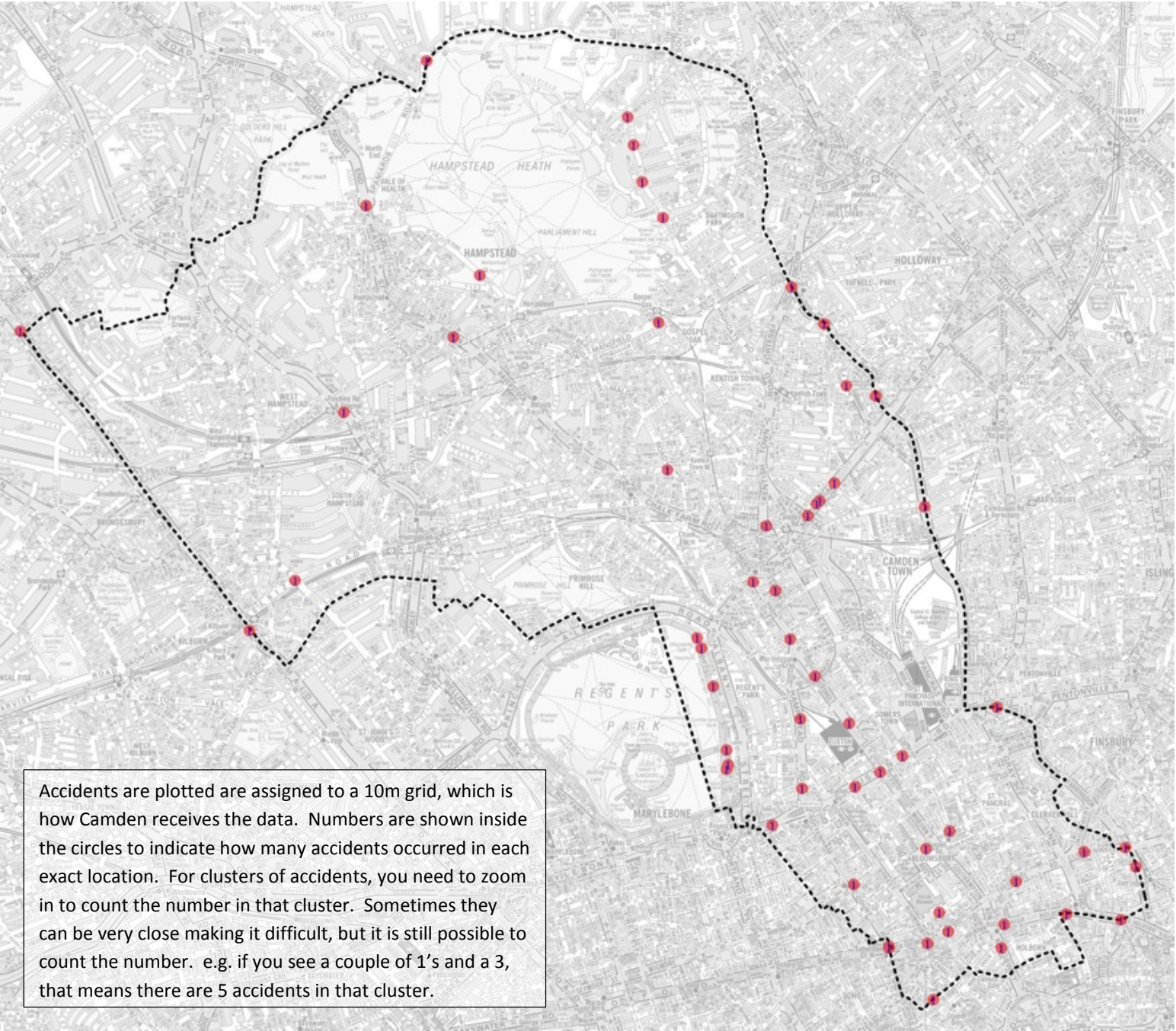
10 - Rear shunted the cyclist (83)

Examples

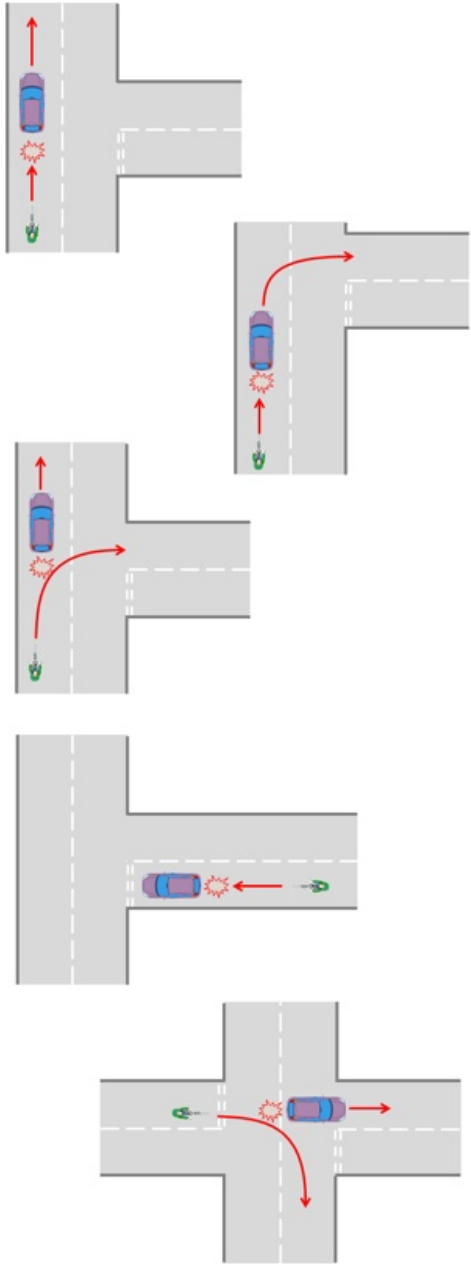


Etc.

11 - Cycled into the back of vehicle (59)



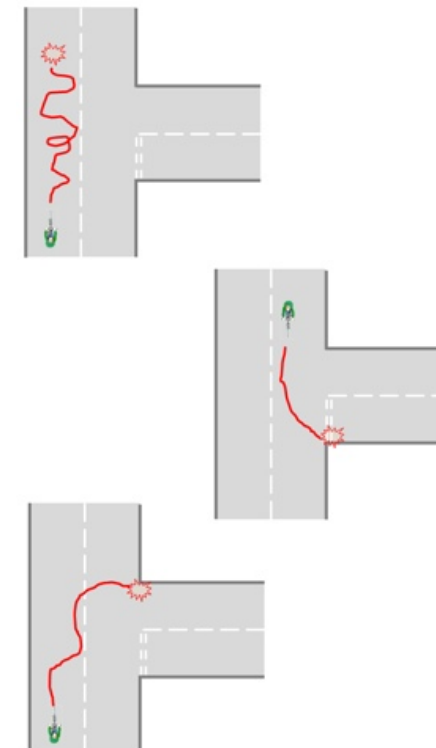
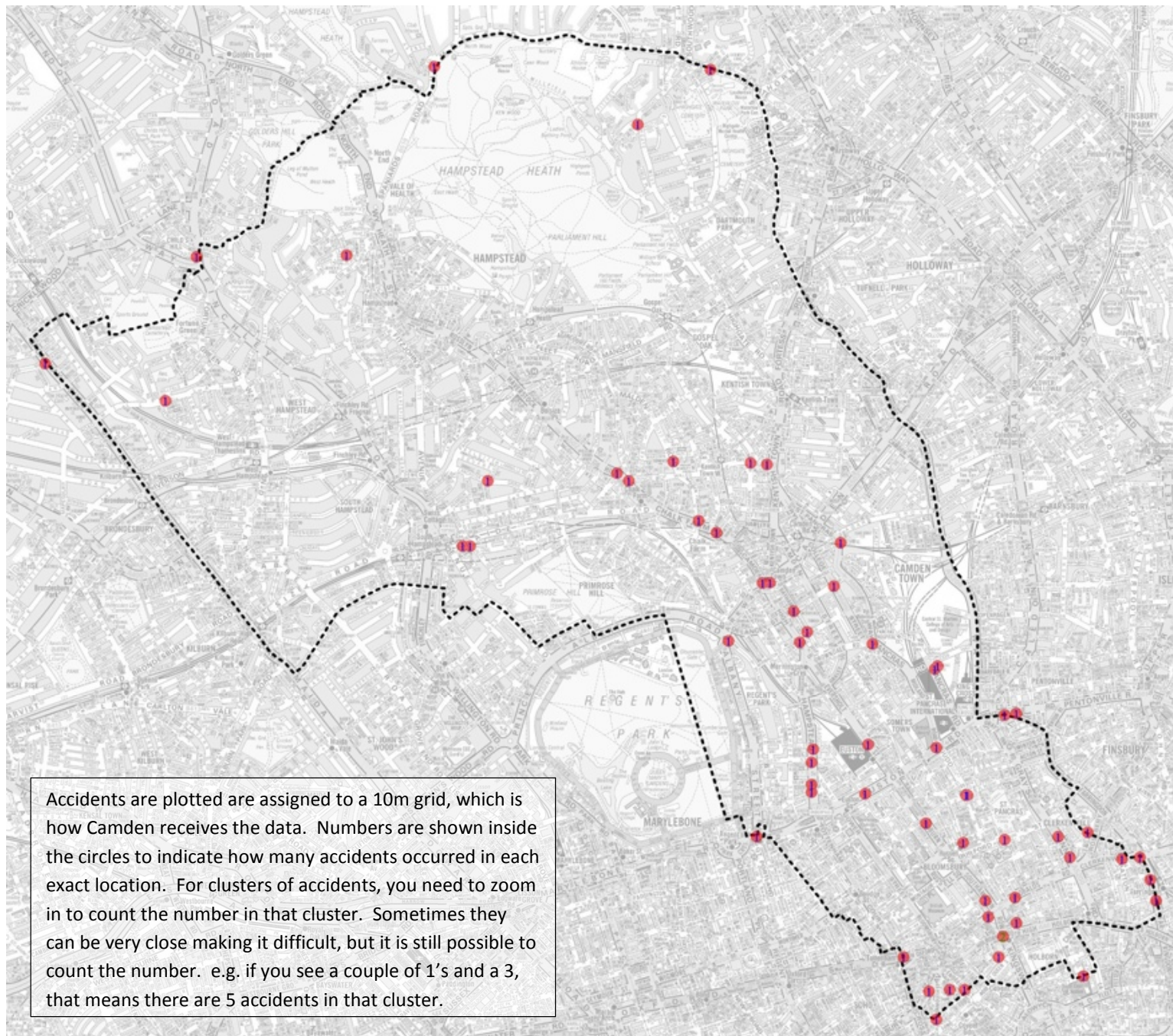
Examples



Etc.

12 - Cyclist Lost Control (63)

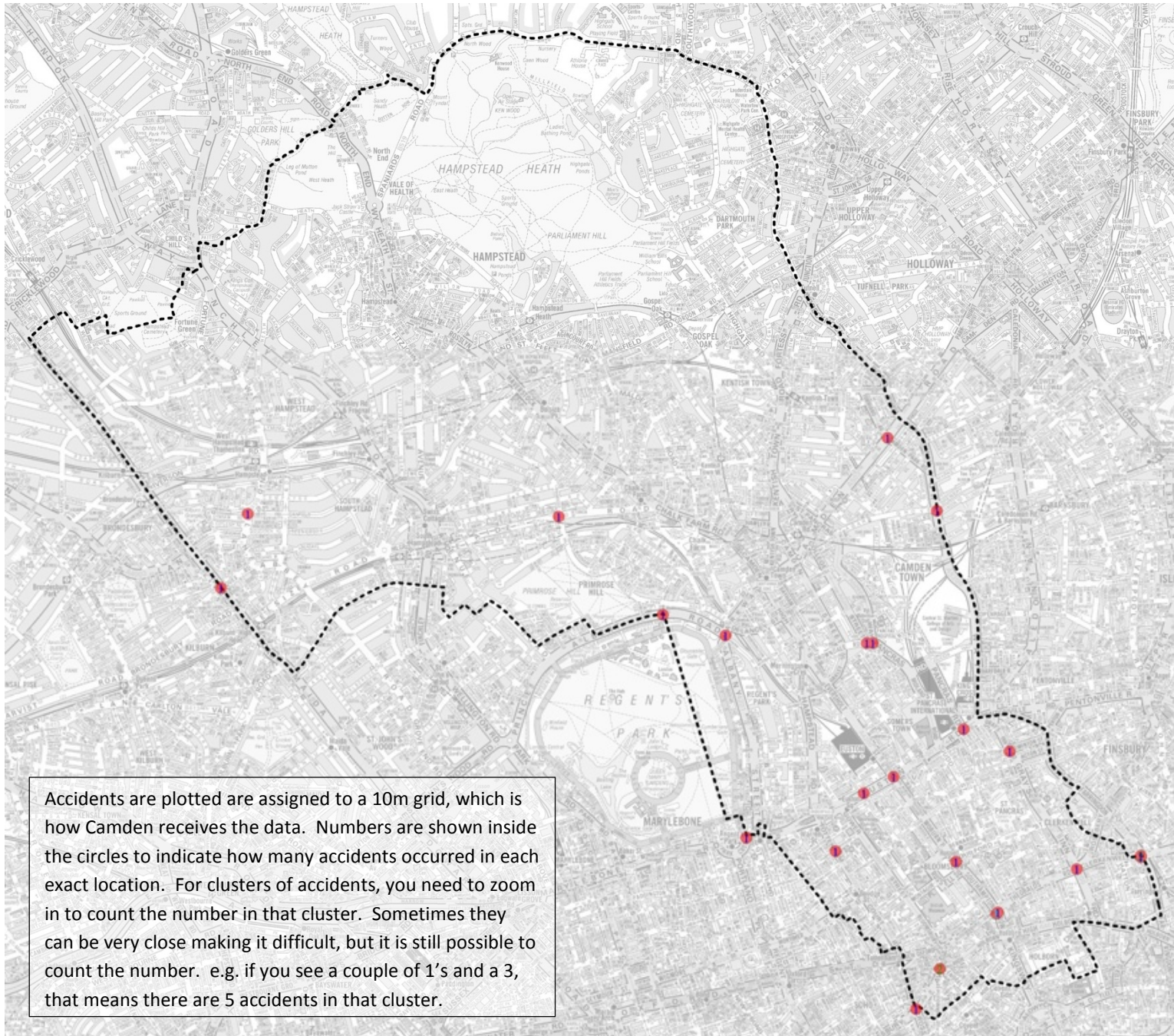
Examples



etc... Basically anything where the cyclist lost control (which includes taking a turn too wide) and no other vehicles or pedestrian contributed to causing the crash (the cyclist may of still hit a vehicle, but as a result of the cyclist losing control).

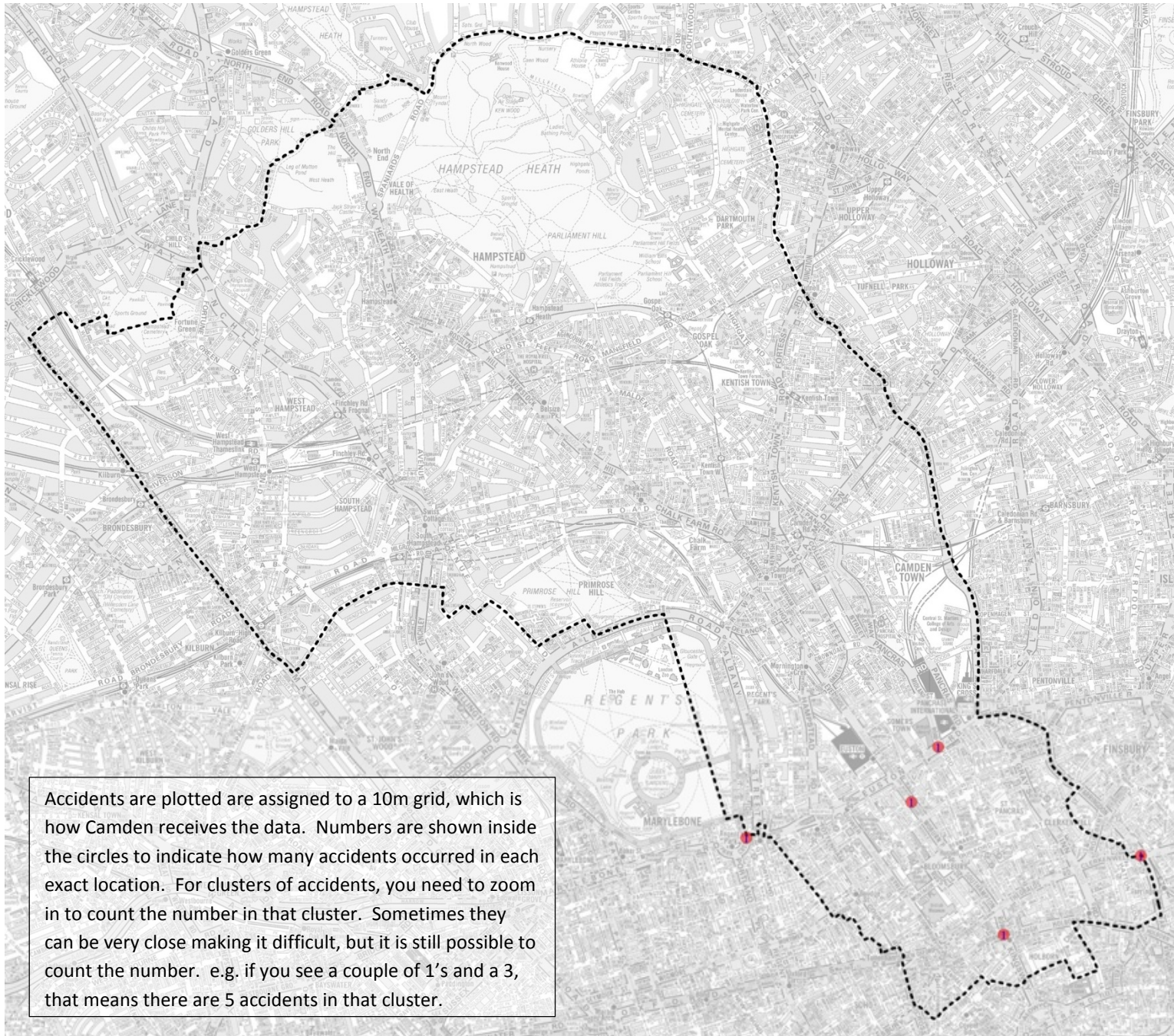
13 - Cyclist jumped red light (29)

Any movements where the cyclist jumped a red light.



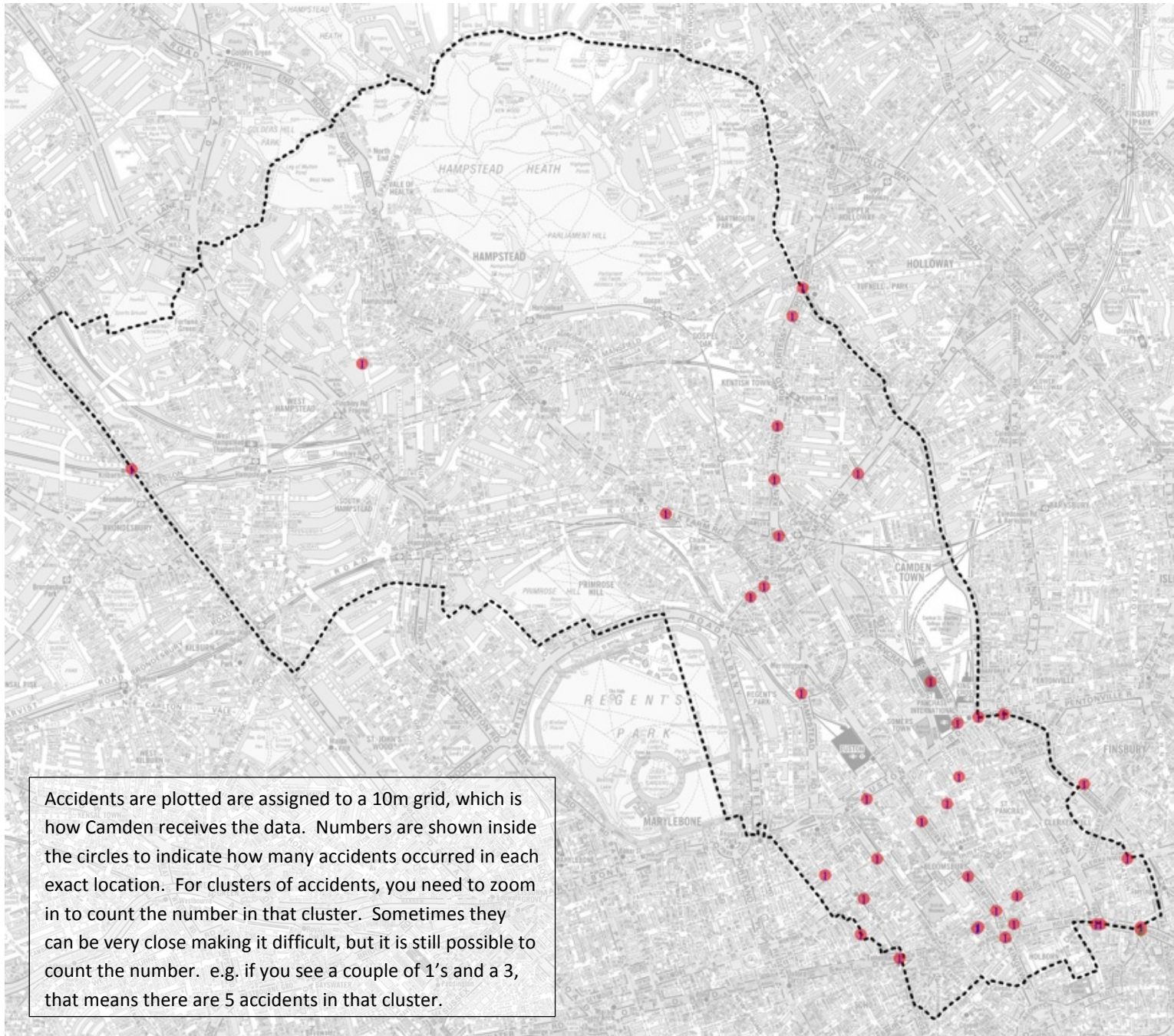
14 - Vehicle jumped red light (5)

Any movements where the vehicle jumped a red light.

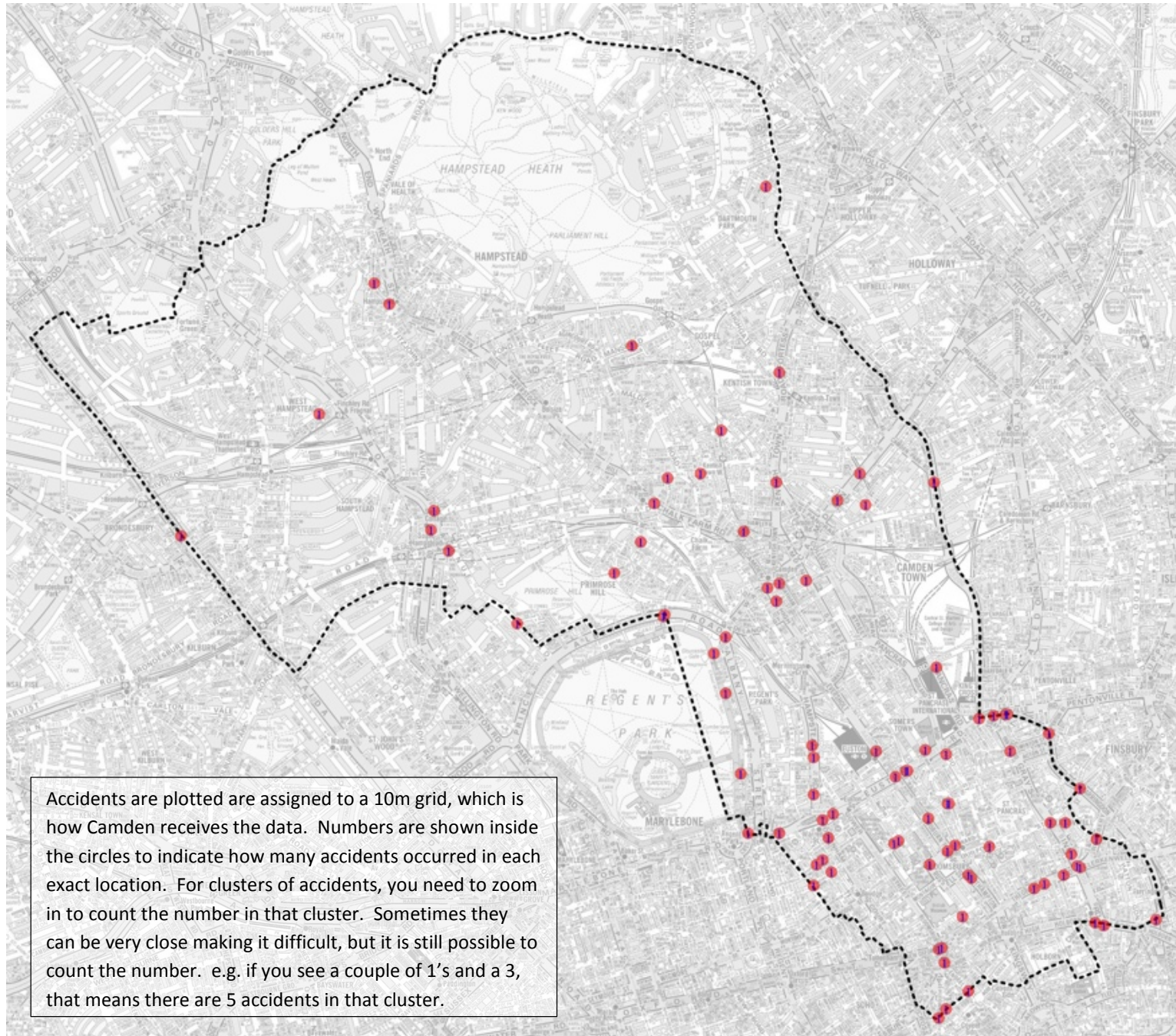


15 - Hit pedestrian (39)

Any movements where a pedestrian, who was either in the road or stepping out into the road or a crossing, was hit by a cyclists.



16 – Other (89)



Anything else that doesn't fit into the above categories or it is unclear from the data what happened.