

Date: 14th May 2020
Our reference: Covid-19 Safe Travel in Camden/Sandall Road
Email: safetravel@camden.gov.uk

Transport Strategy Service
London Borough of Camden
Town Hall
Judd Street
London
WC1H 9JE
Phone: 020 7974 4444
camden.gov.uk

Responding to Coronavirus (COVID-19)

New Coronavirus (COVID-19) safety measures on Sandall Road

Dear Resident / Business, Local group,

Summary

- **We are making changes on Sandall Road to make it easier for you to walk and cycle in the area to reach key locations in response to Coronavirus (COVID-19)**
- **We will be reducing traffic levels on Sandall Road making it safer for pedestrians and cyclists**
- **Work will start on 21st May between 8am – 5pm**
- **You can share your comments on these changes via safetravel@Camden.gov.uk**
- **You can find out more about these changes on our website <https://www.camden.gov.uk/making-travel-safer-in-camden>.**
- **Make your suggestion for locations you think need changes via <https://camdensafetravel.commonplace.is/> , email or call us using the details above**

The Coronavirus (COVID-19) pandemic has created new road safety challenges in Camden that the council is taking seriously. We want to make it easier and safer for people to walk and cycle locally, shop on their local high street, reach their local green spaces, schools and NHS sites, all while maintaining physical distancing. We are also looking to tackle future challenges caused by changes in the way that people travel once lockdown restrictions are eased. This includes a predicted rise in walking, cycling and car use with people less likely to choose public transport.

To respond to these challenges quickly we are making a series of safety-based changes to streets in Camden. Included in this letter is:

- Detail on the changes being made in your area
- A drawing showing the changes being made

- A drawing showing who we have notified
- Information on how to find out more

How are we responding to Coronavirus (COVID-19) safety issues?

We have identified a number of locations across the borough to begin to tackle the safety issues, including that proposed in your area. These initial locations have been chosen as they meet one or more of the following criteria:

- New safety issues physical distancing, walking or cycling have been highlighted to us as a result of Coronavirus (COVID-19)
- Before the pandemic there had already been some local community engagement from existing projects which highlighted issues which we are looking to address
- They are areas where we can make it easier and safer for people maintaining physical distancing while walking and cycling locally, to shop, reach their local green spaces, schools and NHS sites

These safety measures include looking at widening pavements, reducing through traffic on residential streets and creating “pop-up” cycle lanes. This will make it easier for people to access amenities and to use local roads to journey to key destinations or simply for exercise while staying 2m apart.

You can also tell us your own suggestions for other locations by using our dedicated website which can be found here: <https://camdensafetravel.commonplace.is/> or by emailing us at safetravel@Camden.gov.uk .

What is the challenge on Sandall Road?

Overall the number of vehicles using our roads is down but speeding has increased as a minority of irresponsible drivers take advantage of quieter roads. In London some average speeds are being recorded at 37mph on 20mph roads. The Metropolitan Police traffic team has been widely reported in the media recently, sharing that the number of speeding drivers recorded has risen by nearly 8-fold compared with the same period last year.

Once the lockdown is eased the predicted rise in walking, cycling and car use will also mean a change in the way people travel in the area with extra pressure on streets. We are aware that physical distancing requirements have meant that some areas of pavement are now too narrow for pedestrians to use safely.

We know from previous engagement with the local community and stakeholders during the Kentish Town Healthy Streets project, that there is a concern that drivers are using Sandall Road to travel east to west from the A503 (Camden Road) to the A400 (Kentish Town Road) through an area of residential streets. In order to respond to this issue we are going to be adding a bollard on Sandall Road near to the entrance to Canteloves Gardens.

What will the work involve?

The change we will be making on Sandall Road is as follows:

- Preventing through-motor traffic along Sandall Road by installing a droppable bollard near the junction with Camden Road

- There will be some noisy work while we install the bollards which will be completed on the 21st May between 8am and 5pm

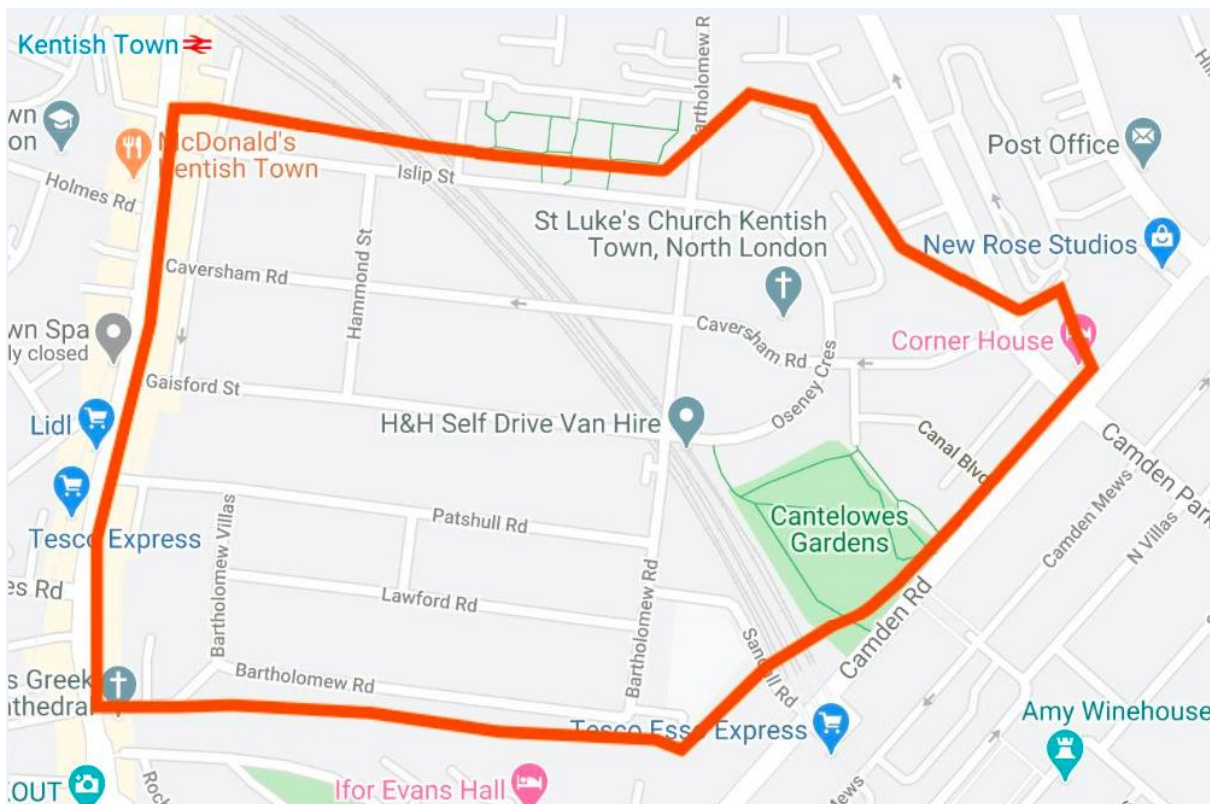
Access to all properties on both sides of the restriction will be maintained so you will still be able to reach your home by car and receive home deliveries but through-traffic will be prevented. Pedestrians and cyclists will be able to travel through at all times. Emergency services and bin collection teams will be able to lower the bollard for access.

This change will reduce the amount of through traffic travelling between Camden Road and Kentish Town Road via Sandall Road making it safer for people walking and cycling locally, to shop, reach the entrance to Canteloves Gardens and Camden School for Girls. A drawing of what these changes will look like is included with this letter.

How can you give your views?

We know that there is an immediate need for this safety improvement in response to Coronavirus (COVID-19) so we are using Experimental Traffic Orders which once made can be brought into force relatively quickly.

We have already consulted with statutory emergency services on these changes, who have raised no objections. We are also notifying local residents, businesses and stakeholder groups within the local area and you can see the map of those notified overleaf. You will also see information going up on the local streets and on our website.



The experimental scheme will run for 18 months and you are able to comment at any time on the changes we have implemented. The Council would like to carry out a full public consultation after the experimental scheme has run for 12 months and will take a decision as to whether it can do this nearer the time in light of the circumstances then prevailing. This

consultation will then inform the Council's decision as to whether, at the end of the 18-month experiment, the changes should be made permanent. Traffic levels will also be monitored, as required, on relevant streets after the scheme is implemented.

We will be in contact with you again with more details on this closer to the time.

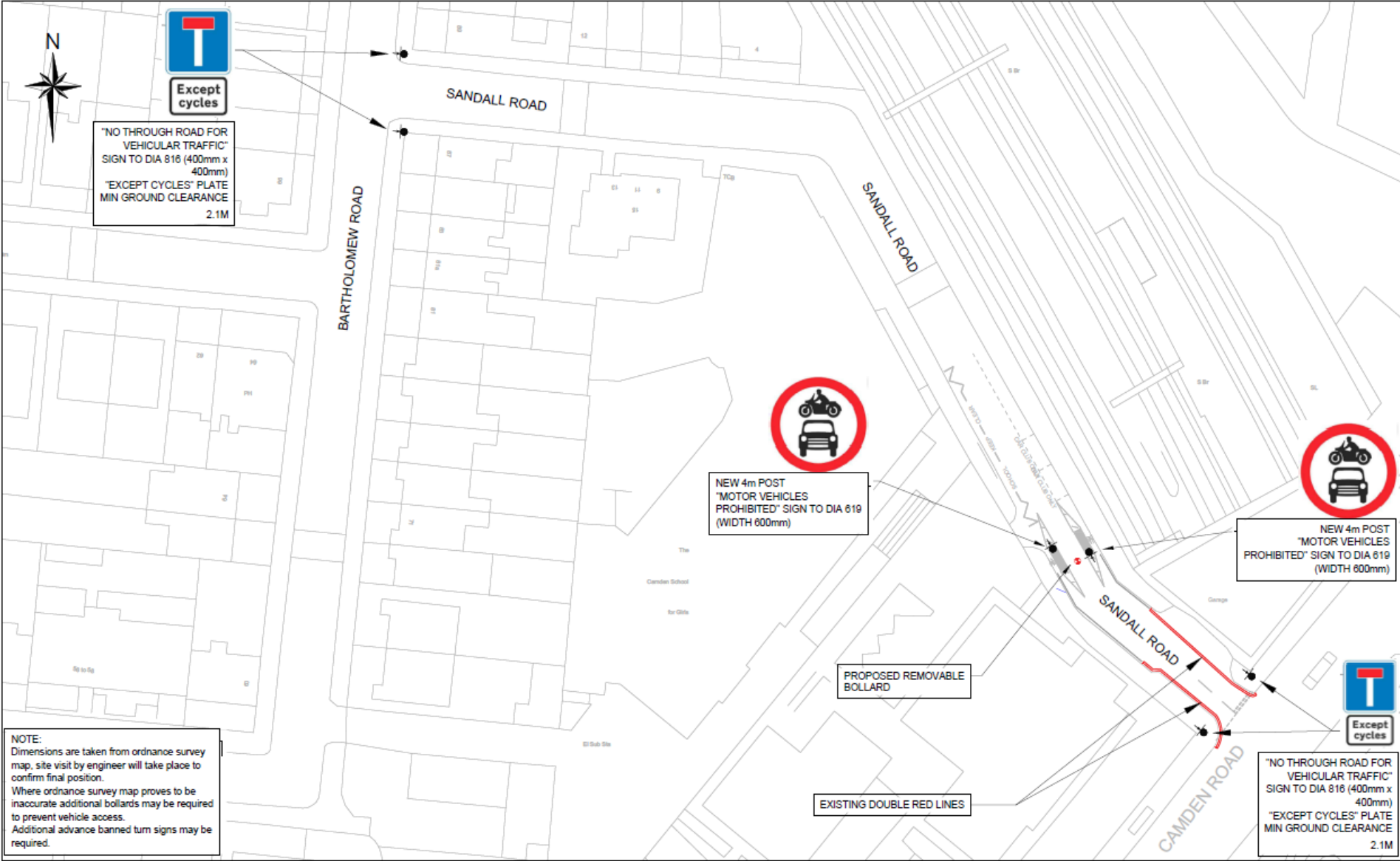
How can you find out more?

More information on these schemes will be added to our website shortly
<https://www.camden.gov.uk/making-travel-safer-in-camden>

Where you can also find:

- the full Single Member Decision report
- the Kentish Town Healthy Streets Commonplace map comments
<https://healthystreetsforcamdenmap.commonplace.is/comments>
- The Commonplace map for Coronavirus (COVID-19) where you can make your own suggestions of other changes that you would like to see
<https://camdensafetravel.commonplace.is/>

In the meantime if you have any further questions or comments on the measures please don't hesitate to get in touch via safetravel@Camden.gov.uk .



NOTE:
 Dimensions are taken from ordnance survey map, site visit by engineer will take place to confirm final position.
 Where ordnance survey map proves to be inaccurate additional bollards may be required to prevent vehicle access.
 Additional advance banned turn signs may be required.