

To: safetravel@camden.gov.uk

Eton Avenue Area Consultation

This response to the consultation on the above proposal from Camden Council is from Camden Cycling Campaign, the local borough group of the London Cycling Campaign. We represent the interests of cyclists living or working in or travelling through Camden and aim to expand the opportunities for all to cycle safely in the borough. We have discussed this proposal within our organisation by email.

General Comments

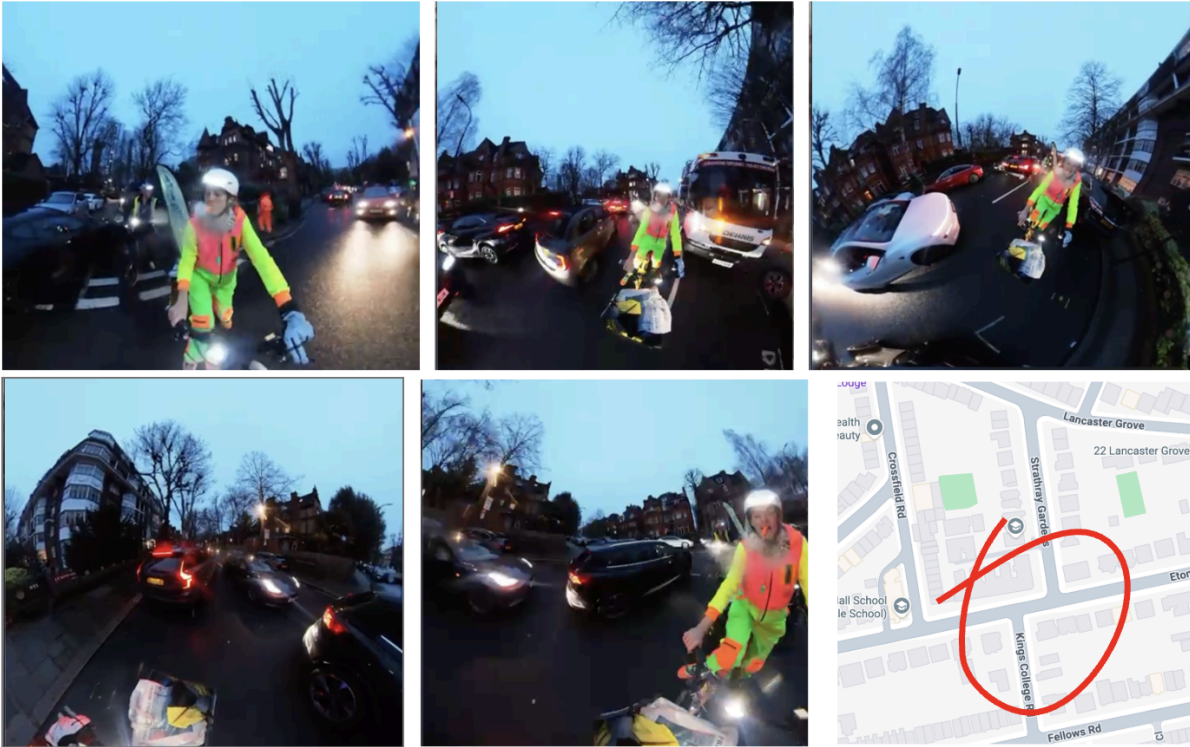
We are pleased to see the continuing progress on changing Camden's streetscape away from the dominance of motor vehicles - this may lead to some behaviour change and mode shift to walking/cycling.

We support the reduction in parking bays and the introduction of greening and of seating and play areas. Although not explicitly mentioned in the text we support the replacement of single yellow with double yellow lines and no-loading blips within 10m of all junctions as shown in the consultation diagrams.

However, we feel that the proposals will do nothing to reduce the volume of motor traffic in the area. The organisers of the Bike Bus report that some of the roads are impassable due to backed-up motor traffic - see photo below where even the police officer can't get through and children and parents are having to use the footway. Traffic reduction measures are needed in addition to the current proposals.



Lancaster Grove at school journey time - impossible!



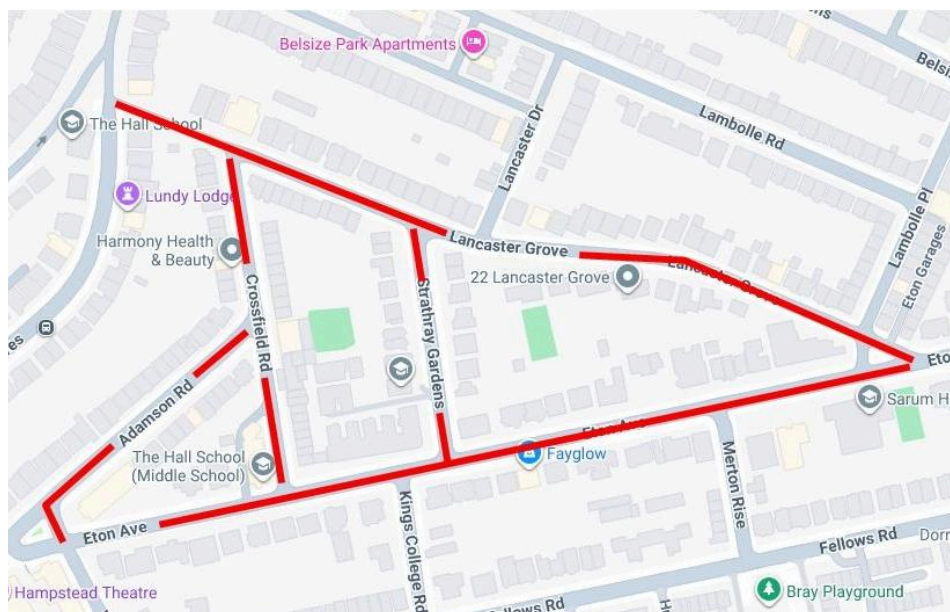
Camden bike bus, with ~20 riders, struggling to make their way past motor traffic through King's College Road, Eton Avenue and Strathay Gardens at school drop off time



Camden Bike Bus are unable to cycle up Crossfield Road at school drop off time

A [survey](#) of the Camden Bike Bus families carried out by CCC showed that around two thirds of families do not feel able to cycle to school themselves on days when the bike bus does not run. 88% of those who do not cycle on other days cited safety as the main reason, with motor traffic, lack of infrastructure, busy junctions and parked cars being the major hazards. Improvements to the area are necessary to ensure that cycling and walking become a realistic option.

Although Eton Avenue has no direct access to Finchley Road it features heavily at school run times with heavy motor traffic going through Crossfield Road, Strathray Gardens and Lancaster Grove (see the above photos) making the bike bus route extremely hazardous. A glance at Google Maps shows 4 schools on Eton Avenue: Sarum Hall (no 15), St Mary's Town and Country School (no 38-40), Trevor Roberts (no 57) and The Hall Middle School (no 59) as well as Hereward House on Strathray Gardens (no 23) and The Hall Senior School on Crossfield Road (no 23) and the Hall Primary school on Belsize Park (no 69). We suggest that all of these schools be made part of a Healthy School Streets Zone – like the Neighbourhoods of the Future scheme on the other side of Fitzjohns Avenue.



See figure to the left showing streets that could be part of an HSS Zone.

Timed closures on local streets, including those without schools, will mean they can be safely used by children cycling to /from school.

Specific Comments

Eton Avenue

Junction with Lancaster Grove

- We support the proposal to close a section of Lambolle Place to motor vehicles and the proposed greening and play area. The space will be changed from an area where cars wait to drop off and pick up to a welcome place for people to stop and play.
- We support the planned parallel crossing of Eton Avenue near Sarum Hall school. This links to the cycle route through the junction and will make the right turns at this junction safer and easier for vulnerable cyclists. It also gives a direct route into the school from Lancaster Grove and Eton Avenue.
- We support the informal raised crossings east and west of this junction, the double yellow lines outside the school and the continuous footway at the mouth of Lancaster Grove. All of these will make it safer for pedestrians and cyclists.
- We support the proposal to add two cycle hangars.

Junction with Merton Rise

- We support the continuous footway, the build-outs on Eton Avenue with planting and the addition of a cycle hangar.

Between Merton Rise and Kings College Road

- We support the informal raised crossing with build-out.

Junction with Strathray Gardens and Kings College Road

- We support the continuous footways and the informal raised crossing with build-outs and the addition of a cycle hangar.

Lancaster Grove

Junction with Strathray Gardens

- We strongly support the narrowing of this junction and the continuous footway. As well as making crossing the junction safer, this may deter some of the rat-running drivers.

Response to Specific Consultation Questions

Question	Detail	CCC Response
9. To what extent do you agree or disagree with the overall Safe and Healthy Streets proposals in the Eton Avenue area		We fully support the scheme as far as it goes.
10. The proposals for the Lancaster Grove junction with Eton Avenue and Lambolle Place	Creating a public space with new green areas, seating, play features, new lighting, sustainable drainage and new trees at Lambolle Place	Strongly agree
	Widening pavements, planting, new trees and a parallel zebra crossing on Eton Avenue	Strongly agree
	Adding a raised crossing and widening the pavement outside No.14 Eton Avenue	Agree
	Adding 2 new cycle hangars, widening pavements, adding plants and trees, pencil shaped bollards, seating and cycle stands on Eton Avenue	Strongly agree
	Adding double yellow lines with single kerb markings for No Loading 8am - 9am and 3pm - 4pm Monday - Friday, outside of Sarum Hall School.	Strongly agree
	Adding a continuous pavement across Lancaster Grove at Eton Avenue	Strongly agree
	Adding raised crossings and widened pavement outside of No. 8 on Lancaster Grove	Agree

Question	Detail	CCC Response
11. The proposals for Merton Rise junction with Eton Avenue	Adding a new continuous pavement across Merton Rise at Eton Avenue	Agree
	Adding a crossing point for pedestrians	Strongly Agree
	Adding planting	Agree
	Adding a cycle hangar	Strongly agree
12. The proposal for Eton Avenue between Merton Rise & King's College Road	Adding a new raised crossing with widened pavements on Eton Avenue outside Springfield Court:	Strongly Agree
13. The proposals for Strathray Gardens junction with Eton Avenue & King's College Road junction with Eton Avenue	Adding a new continuous crossing over Strathray Gardens	Strongly Agree
	Widening pavements	Agree
	Adding a new raised crossing in between Strathray Gardens junction with Eton Avenue and King's College Road junction with Eton Avenue	Strongly Agree
	Adding a new continuous crossing over King's College Road at Eton Avenue	Strongly Agree
	Adding one cycle hangar outside of Eton Court to the west of Eton Avenue at the junction with King's College Road	Strongly Agree
	Adding plants and trees	Agree

Question	Detail	CCC Response
14. The proposals for Strathray Gardens junction with Lancaster Grove	Introducing a continuous crossing over Strathray Gardens at Lancaster:	Strongly Agree
	Widening pavements	Agree
	Adding a new tree at this junction:	Agree
15. What do you think you might like about the changes proposed? (you can choose more than one)		<p>Walking will be easier and safer</p> <p>Crossing the road will be easier and safer</p> <p>Cycling will be easier and safer</p> <p>Traffic dominance will be reduced</p> <p>Air quality will be better</p> <p>Noise and disturbance will be reduced</p>
16. What do you think you might not like about the changes proposed?		There are no measures to actually reduce motor traffic, especially vehicles using the area to cut through
17 Do you think the proposals may have an impact on you (or others) with reference to any one or more of the following protected characteristics?	Yes - I can think of some positive impacts (tell us more below)	<p>These changes will especially benefit young people travelling to schools in the area:</p> <ul style="list-style-type: none"> - They will be exposed to less road danger and less pollution. - Cycling to school offers significant health, mental, and developmental benefits for children. It boosts cardiovascular fitness, helps maintain a healthy weight, improves mental alertness, reduces stress, and fosters independence.

Please acknowledge receipt of this response. We would be very happy to discuss any aspect of our comments; contact details are below.

John Chamberlain, Jean Dollimore, Suzanne Weller, Steve Prowse
john@camdencyclists.org.uk
Camden Cycling Campaign, 1 Estelle Road, London NW3 2JX